

Y151 Transmission Line Rebuild Project



Meeting the Region's Growing Energy Needs

Project Description:

The Y151 transmission line is an existing 115-kilovolt (kV) or 115,000 volt overhead line connecting the Eversource substation near Power Street in Hudson, New Hampshire, with the National Grid substation at Dracut Junction in Massachusetts. The current New Hampshire portion of the line is the oldest Eversource transmission line in the state, and consists of wooden "H-frame" structures that will be rebuilt using weathering steel H-frame structures. Thirty-seven Eversource structures will be replaced along the center line of the existing power line corridor between two existing 34.5-kV (34,500 volt) distribution lines. Eversource will also be performing related substation upgrades within the existing fence line at the Power Street Substation. These improvements will strengthen our system and ensure that our customers have reliable power to meet their energy needs.

Project Need:

Since the line was constructed, electric demand in the area has increased substantially. The regional system operator, ISO New England, has determined that the existing Y151 transmission line may not meet customer demand under certain operating conditions. This necessitates that the existing transmission structures be replaced with new structures and a new higher-capacity 115-kV line be installed in order to accommodate current customer demand and prepare for future load growth.

This Project is designed to meet an electric system reliability need and is in no way associated with the Kinder Morgan gas line project.

Location:

The existing overhead transmission line would be rebuilt from the Power Street Substation in Hudson to National Grid's transmission line right-of-way near Bockes Road in Hudson, New Hampshire. The portion of the line being rebuilt by Eversource is approximately 3.7 miles long and crosses Lampron Road, Bonnie Lane, Highland Street, Greeley Street, Rangers Drive, Barretts Hill Road, Dugout Road, Robinson Road, and McCrady Drive. The remaining portion of the line, from McCrady Drive in Hudson into Windham, New Hampshire, will be rebuilt by National Grid. This work is not expected to interrupt electric service to homes or businesses.

Timing:

Pending all necessary approvals, construction is scheduled to begin during the summer of 2016, with restoration of disturbed areas to be completed by the end of 2016.

Community Outreach:

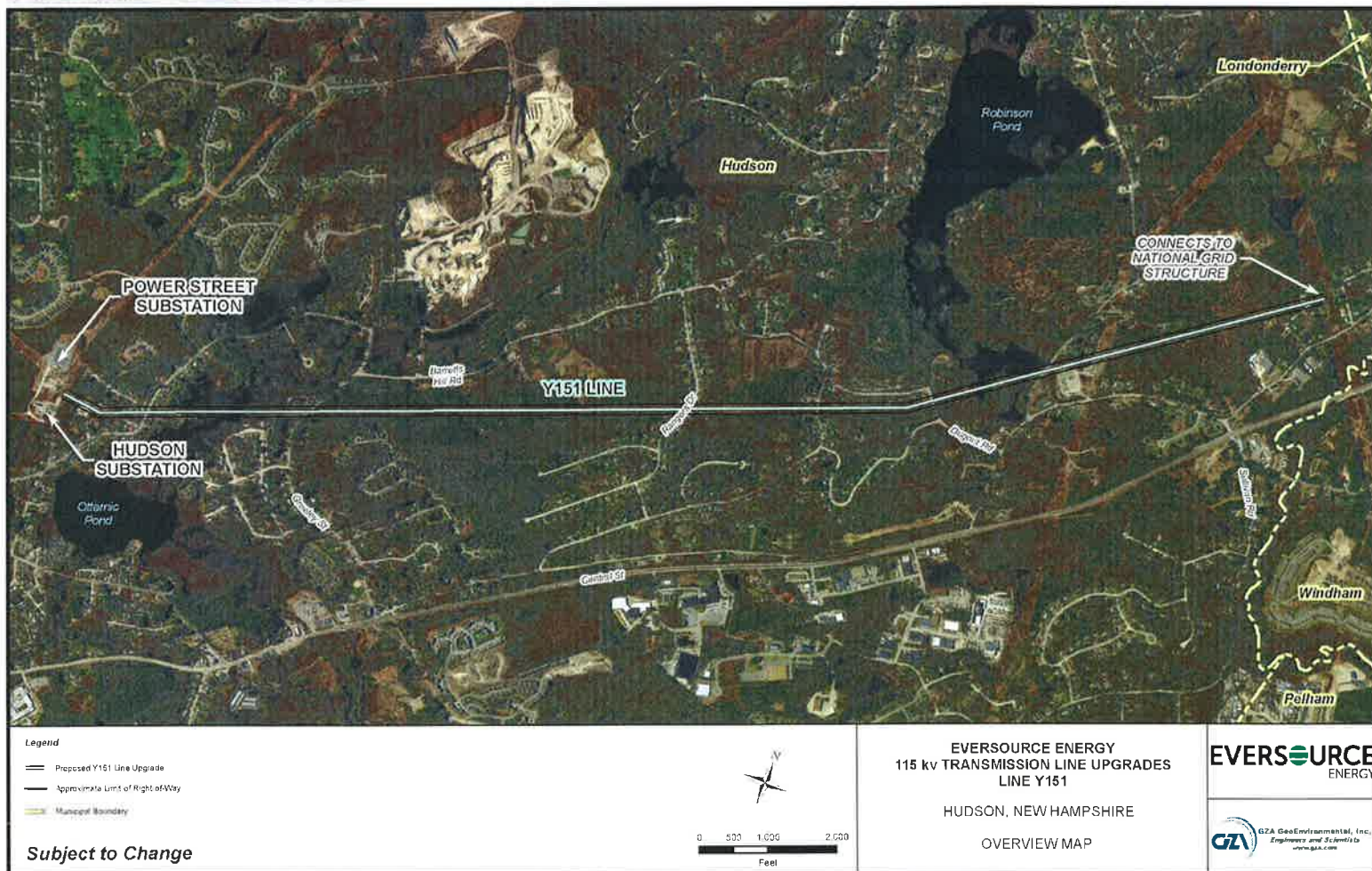
Keeping our customers and community leaders informed about Eversource activities in the area is an important part of our work in the communities we serve. Communication with neighbors, public officials, and other stakeholders will occur before construction begins and throughout the Project process.

Continued>

Y151 Transmission Line Rebuild Project



Project Location Map:



Visit our website Eversource.com, call 1-888-926-5334, or email us at TransmissionInfo@eversource.com to learn more.