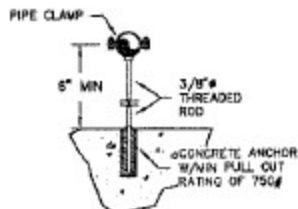
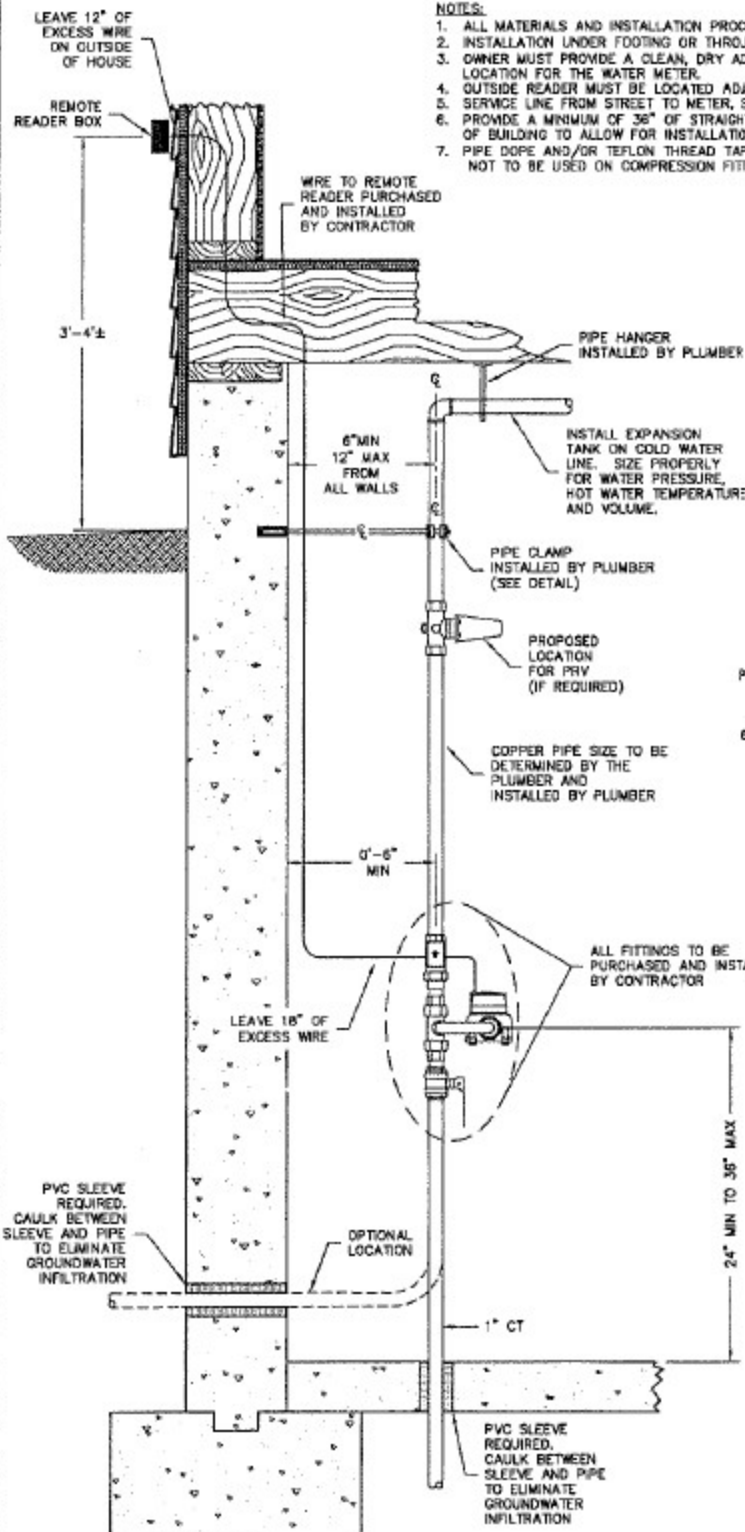


Attachment 'X'

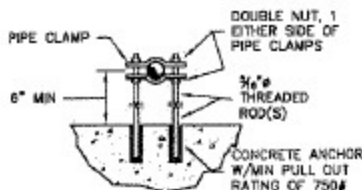
NOTES:

1. ALL MATERIALS AND INSTALLATION PROCEDURES WILL CONFORM TO P.W.W. SPECIFICATIONS.
2. INSTALLATION UNDER FOOTING OR THROUGH FOUNDATION WALL AT OWNER'S OPTION.
3. OWNER MUST PROVIDE A CLEAN, DRY ACCESSIBLE AND WARM (CONTINUALLY ABOVE 45°F) LOCATION FOR THE WATER METER.
4. OUTSIDE READER MUST BE LOCATED ADJACENT TO DRIVEWAY.
5. SERVICE LINE FROM STREET TO METER, SIZE & MATERIALS TO BE APPROVED BY P.W.W.
6. PROVIDE A MINIMUM OF 36" OF STRAIGHT COPPER TUBING AT SERVICE ENTRANCE INSIDE OF BUILDING TO ALLOW FOR INSTALLATION OF P.W.W. METER AND VALVES.
7. PIPE OPE AND/OR TEFLON THREAD TAPE TO BE USED ON ALL FIP OR MIP FITTINGS. NOT TO BE USED ON COMPRESSION FITTING THREADS.



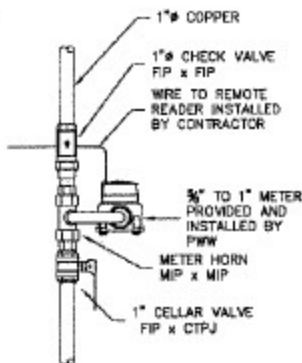
PIPE CLAMP OPTION A

NTS



PIPE CLAMP OPTION B

NTS



PENNICHUCK

DETAIL A-25
TYPICAL 1" CT SERVICE WITH 3/8", 3/4"
OR 1" METER SERVICE INSTALLATION

PENNICHUCK WATER WORKS, INC.
REV: 10-17 SCALE: NTS