

ROAD SURFACE MANAGEMENT SYSTEM ASSESSMENT

For

TOWN OF HUDSON, NEW HAMPSHIRE



Prepared by:
Nashua Regional Planning Commission
30 Temple Street
Nashua, NH 03060

In Partnership with:

New Hampshire Department of Transportation
University of New Hampshire Technology Transfer Center
Statewide Asset Data Exchange System (SADES)

April 24, 2020



TABLE OF CONTENTS

1.0	INTRODUCTION	1
2.0	BENEFITS OF DEVELOPING A PAVEMENT MANAGEMENT PLAN.....	1
A.	INVENTORY OF PAVED ROADS	1
B	PRIORITIZING MAINTENANCE NEEDS	2
C	JUSTIFYING MAINTENANCE BUDGET INCREASES	2
D	MAKING EFFICIENT USE OF THE TOWN’S HIGHWAY BUDGET	2
E	PAVEMENT PRESERVATION AND MAINTENANCE CONCEPTS	4
3.0	EVALUATION OF EXISTING ROADWAY CONDITIONS.....	4
4.0	INITIAL PAVEMENT CONDITIONS	6
5.0	PAVEMENT CONDITION FORECASTING & ANALYSIS	8
6.0	SCENARIO FORECASTING RESULTS	9
A	FORECASTING SCENARIO 1: \$750,000 ANNUAL SPENDING PER YEAR.....	9
B	FORECASTING SCENARIO 2: MAINTAIN 80 PCI – UNLIMITED SPENDING.....	10
7.0	CONCLUSION	11
A	FORECASTING SCENARIO 1: \$750,000 ANNUAL SPENDING PER YEAR.....	11
B	FORECASTING SCENARIO 2: MAINTAIN 80 PCI – UNLIMITED SPENDING.....	11

APPENDECIES

APPENDIX A – INITIAL PAVEMENT CONDITIONS

APPENDIX TABLE A1: PAVEMENT CONDINTION INDEX AND PRIORITY SEGMENT LIST..... 1

APPENDIX B – SCENARIO 1 ANALYSIS RESULTS

APPENDIX TABLE B1: ANNUAL REPAIR COST 1
APPENDIX TABLE B2: NETWORK PAVEMENT CONDITION INDEX AND COST BY YEAR 1
APPENDIX TABLE B3: COST BY REPAIR TREATMENT BY YEAR 2
APPENDIX TABLE B4: REPAIR DETAIL BY YEAR..... 2

APPENDIX C – SCENARIO 2 ANALYSIS RESULTS

APPENDIX TABLE C1: ANNUAL REPAIR COST 8
APPENDIX TABLE C2: NETWORK PAVEMENT CONDITION INDEX AND COST BY YEAR..... 8
APPENDIX TABLE C3: COST BY REPAIR TREATMENT BY YEAR 9
APPENDIX TABLE C4: REPAIR DETAIL BY YEAR 10

This page intentionally left blank

1.0 INTRODUCTION

Beginning in the Fall of 2019, Nashua Regional Planning Commission (NRPC) conducted a Road Surface Management System (RSMS) assessment for the Town of Hudson using methodology and software developed by the Department of Civil Engineering at the University of New Hampshire. Our technology platform was provided by the NH Statewide Asset Data Exchange System (SADES), a partnership between New Hampshire Department of Transportation (NH DOT) and the UNH Technology Transfer Center (UNHT²). Since 2014, UNHT² has provided training and support to all nine NH regional planning commissions, who provide RSMS assessments to towns.

This assessment had two phases: 1) a town-wide inventory of pavement condition on all town-owned paved roads (phase 1), and 2) an analysis examining changes in pavement condition, repair treatment effect, and repair cost over a 10-year period (phase 2). We do not intend for this assessment to constrain the decision-making process of the Hudson Department of Public Works (DPW) in selecting roads for repairs and treatment types. Instead, we intend for this assessment to serve as a tool for the DPW and town officials to assess current and future pavement condition and as a guide for budgeting the cost of future repairs.

For phase 1, town officials provided a list of all paved, town-maintained roads. We sampled each of these roads in 0.25-mile segments in the Fall of 2019, evaluating cracking and other characteristics that contribute to pavement condition. We used data from this inventory to describe initial pavement conditions in maps, charts, and spreadsheets that were presented to the town in the Winter of 2020. We also generated a prioritized list of road segments for repair.

For phase 2, town officials provided a list of preferred pavement repair treatments and their per unit area costs. Using analysis software, we applied repairs treatments to road segments in a specific year within 10-year period. Phase 2 contains two analysis scenarios: 1) \$750,000/year of repair spending (scenario 1), and 2) unlimited spending to keep roads in their current condition (scenario 2). This approach will allow town officials to predict future pavement condition and estimate the cost of future repairs.

In section 2, we described the benefits of developing an RSMS and rationale for this plan. In section 3, we describe our methodology for assessing initial pavement condition. In section 4, we describe our results from phase 1 of the RSMS assessment (initial pavement conditions). In section 5, we describe our procedure for analyzing future pavement condition and repair cost. In section 6, we describe the results from phase 2 (both scenarios) of the RSMS assessment, and in section 7 we discuss our results and make general conclusions.

2.0 BENEFITS OF DEVELOPING A PAVEMENT MANAGEMENT PLAN

A. INVENTORY OF PAVED ROADS

It is critical that municipalities know the location, condition, and structure of their road network. In this report, we will present this information for all paved, town-maintained roads in Hudson. In our supplementary materials, we present detailed attribute information such as road width, shoulder width, type of shoulder and other attributes associated with 0.25-mile road segments.

B PRIORITIZING MAINTENANCE NEEDS

This report will provide a priority ranking for all paved, town-maintained roads in Hudson (Appendix A). This list will provide an objective method for prioritizing maintenance projects when existing resources are insufficient to meet all needs.

C JUSTIFYING MAINTENANCE BUDGET INCREASES

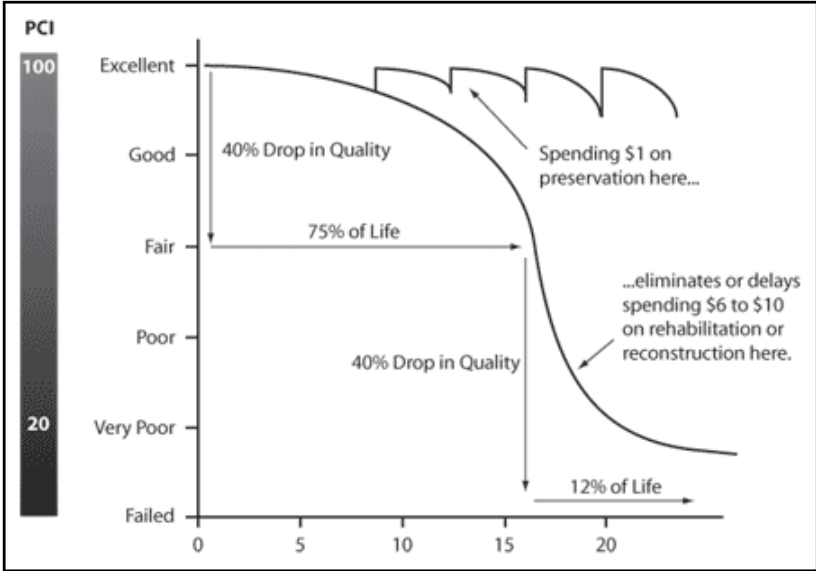
This report will provide town officials with a data-driven means of communicating road maintenance needs to elected officials and voters. This reports also communicates the consequences of deferred maintenance, both in terms of future cost and future pavement conditions.

D MAKING EFFICIENT USE OF THE TOWN'S HIGHWAY BUDGET

After the cost of installation, new pavement requires relatively little maintenance and will therefore be of little cost to a town. For about 75% of a pavement's designed lifespan, maintenance costs are generally less than one-fifth of the cost of pavement rehabilitation. However, if pavement enters the rapid deterioration stage in the last quarter of its designed life, maintenance cost will dramatically increase. Because pavement deteriorates at different rates, there is an "art" to good maintenance management in knowing when a road has reached the critical 75% mark. Often if pavement deteriorates to a point of serious visible distress, it is beyond the critical cost point. An RSMS assessment will help town officials track pavement deterioration across their road network; and, after critical pavements have been identified in the road network, the pavement management system will help town officials select cost effective maintenance strategies based on that pavement's rate of deterioration.

Figure 1 (below) shows pavement condition index (PCI), a measurement of pavement quality, plotted over a 20-year period, representing a sample section of pavement. From year zero to year 15 (approximately 75% of the pavement's service life), the cost for maintenance and repair of roads is one-fourth to one-fifth the cost of maintenance and repair of roads that have deteriorated beyond the 75% mark. Beyond this mark, roads deteriorate at a faster rate. During the first 75% of the roads service life, there is a 40% drop in quality. This road will drop another 40% in quality again shortly after passing the 75% mark in its service life.

FIGURE 1: PAVEMENT DETERIORATION



E PAVEMENT PRESERVATION AND MAINTENANCE CONCEPTS

RSMS tools offer a finite number of repair options, generally in the following key categories:

Preservation

Rehabilitation

Reconstruction

Preservation consists of work that is planned and performed to improve or sustain the condition of a road segment that is already in good condition. Preservation activities generally do not add capacity or structural value but do restore the overall condition of the transportation facility. Preservation treatments are generally non-structural applications that preserve the surface and are designed to extend pavement life. The treatments can range from crack sealing to the application of thin overlays. Preservation is a proactive approach that can reap considerable cost savings because preservation strategies generally cost a fraction of rehabilitation or reconstruction projects.

Rehabilitation is generally considered to be a major repair, often an asphalt overlay following a surface preparation like a hot mix asphalt shim. Rehabilitation is more expensive than preservation, but less expensive than reconstruction.

Reconstruction, the costliest repair option, involves excavation and modification of the existing road base with additional aggregate as well as a new paved surface. This level of repair is usually required following inadequate maintenance, poor drainage, or improper base materials. Reconstruction, such as full-depth reclamation, is much more costly than other repair options.

3.0 EVALUATION OF EXISTING ROADWAY CONDITIONS

In the Fall of 2019, we began our field assessment of condition on all paved, town-maintained roads in Hudson (149 miles). For sampling, we divided roads into segments about 0.25 mile in length. In total, we sampled 696 segments on 434 roads. Dividing roads into multiple sample segments is advantageous because this accounts for differences in pavement quality across a road, and it provides flexibility in assigning maintenance treatments. After concluding the inventory, we input our results to a web-based analytical software tool, developed privately and made available by UNHT². Field inventory data from this assessment remains stored in the NH SADES cloud database and is available on request.

Our inventory has eight categories of pavement distress. We sampled all road segments individually and addressed each category. Pavement distress categories include typical pavement cracking categories and other defects. For most categories, we evaluated two subcategories: severity and extent. Below is a list of all pavement assessment categories:

FIGURE 2: PAVEMENT STRESS FIELD PARAMETERS

Longitudinal or Transverse Cracking	Severity (No Defects, Low, Medium, High) Extent (Low, Medium, High)
Alligator Cracking	Severity (No Defects, Low, Medium, High) Extent (Low, Medium, High)
Edge Cracking	Severity (No Defects, Low, Medium, High) Extent (Low, Medium, High)
Patching or Potholes	Extent (No Defects, Low, Medium, High)
Drainage	Condition (Good, Fair, Poor)

Rutting	Severity (No Defects, Low, Medium, High) Extent (Low, Medium, High)
Roughness	Condition (Smooth, Noticeably Uneven, Rough, Very Rough)
Frost Heave Severity	Severity (None, Low, Medium, Severe)

4.0 INITIAL PAVEMENT CONDITIONS

We input all field inventory data into an online analytical RSMS software, discussed earlier. The software converted pavement distress field observations into a pavement condition index (PCI) value from 1-100. We classified road segments with PCI from 0-57.99 as poor, 58-74.99 as fair, 75-85.99 as satisfactory, and 86-100 as excellent. A significant amount of Hudson’s roads were in excellent condition at the time of this assessment (31.82 miles; 21%). 69.48 miles (47%) were in satisfactory condition. 44.26 miles (30%) were in fair condition. 2.96 miles (2%) were in poor condition. See Appendix A for a complete list of all sample segments with initial PCI and priority ranking.

PCI Class	Total Mileage by PCI Class	%
< 58.00 (Poor)	2.96	2%
58.00 - 74.99 (Fair)	44.26	30%
75.00 - 85.99 (Satisfactory)	69.48	47%
≥ 86 (Excellent)	31.82	21%
Total	148.51	100%

FIGURE 3: INITIAL PAVEMENT CONDITION CATEGORIES BY MILEAGE

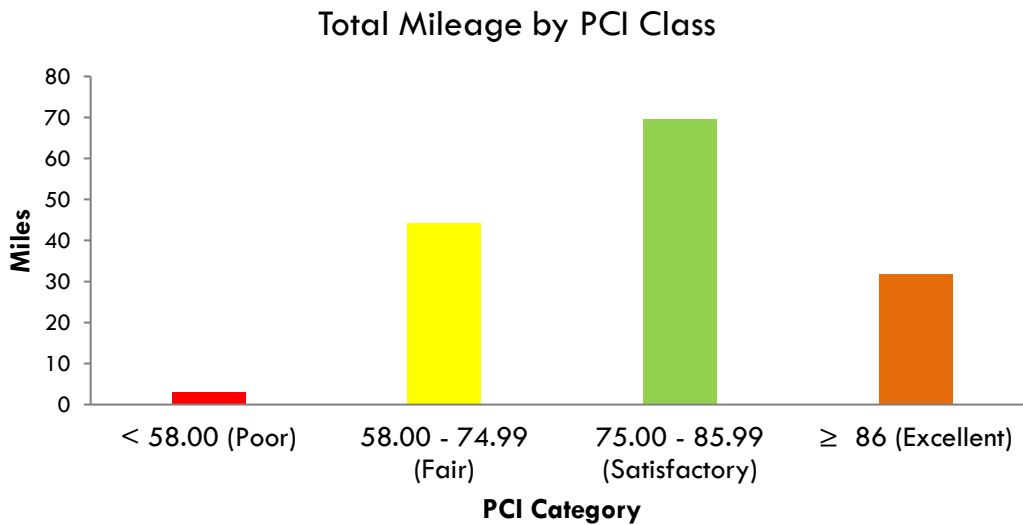
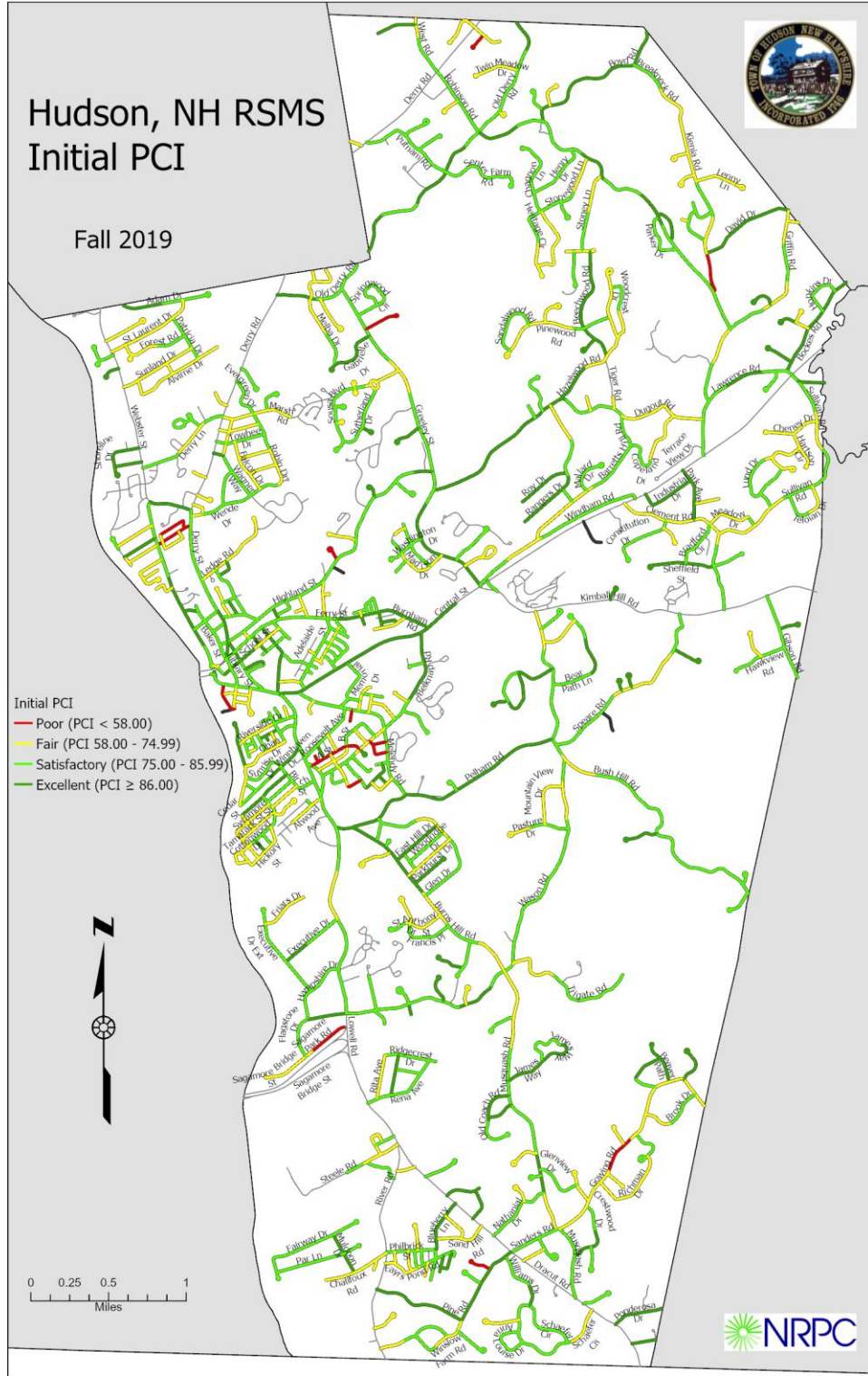


FIGURE 4: INITIAL PAVEMENT CONDITION MAP



5.0 PAVEMENT CONDITION FORECASTING & ANALYSIS

In order to model pavement deterioration over time, repair cost, and future condition, we input the results of our pavement condition inventory into web-based, analysis software. This system forecasted the future condition of each pavement segment over 10 years and calculated a priority score based on condition, traffic, and importance. With this information, we assigned repair treatments to segments based on their need in the appropriate year. Our computer system recorded the cost of each assigned repair with a 3.2% rate of annual inflation. The software also recalculated pavement condition for segments after repairs, allowing us to see the impact of repairs. Using this approach, we developed two scenarios for pavement management over a 10-year period (Figure 5).

In scenario 1, we set average annual repair spending to \$750,000 and used three repair treatments: shim and overlay, full depth reclamation (FDR), and patching. The purpose of scenario 1 is to analyze the changes in pavement condition associated with a fixed budget for repairs.

In scenario 2, we used the same repair treatments and unlimited annual spending. The purpose of scenario 2 is to determine the cost associated with maintaining network PCI (average condition of the road network) at 80, its current condition (Figure 5).

In both scenarios, repair costs include only the cost of pavement repair. Repair costs do not take into account other road maintenance costs including drainage (e.g. ditching, culverts, catch basins, underdrain, etc.), shoulders, signage, guardrail, sidewalks, utilities, curbing, and pavement markings.

FIGURE 5: RSMS FORECASTING SCENARIOS

Forecasting Scenario 1	<p>\$750K Average Annual Repair Cost</p> <ul style="list-style-type: none"> • Shim and Hot Mix Asphalt Overlay – \$9.56 per YD² • Digout and Hot Patch - \$0.75 per FT² • Full-Depth Reclamation and Hot Mix Asphalt (4") - \$17.76 per YD²
Forecasting Scenario 2	<p>Maintain 80 PCI – Unlimited Spending</p> <ul style="list-style-type: none"> • Shim and Hot Mix Asphalt Overlay – \$9.56 per YD² • Digout and Hot Patch - \$0.75 per FT² • Full-Depth Reclamation and Hot Mix Asphalt (4") - \$17.76 per YD²

6.0 SCENARIO FORECASTING RESULTS

A FORECASTING SCENARIO 1: \$750,000 ANNUAL SPENDING PER YEAR

Repair Treatments:

- **Shim and Overlay**
 - Shim and Hot Mix Asphalt (HMA) overlay (2" total depth)
 - \$9.56 per YD²
- **Full Depth Reclamation (FDR)**
 - Full Depth Reclamation (FDR) and HMA (4")
 - \$17.76 per YD²
- **Patching**
 - Digout and Hot Patch
 - \$0.75 per FT²

In this scenario, we selected road segment for repair and assigned treatments within a 10-year horizon with the goal of achieving best possible pavement conditions on a \$750,000 annual budget. We selected roads for repair based on road priority ranking, pavement condition, and guidance from the town.

We selected shim and overlay repairs (the town's preferred repair treatment) in consecutive and adjacent areas within the same year to minimize mobilization costs. We applied patching and FDR to isolated segments beyond the conditional threshold appropriate for shim and overlay. We applied patching to low priority roads and FDR to higher priority roads.

Over a 10-year period, Scenario 1 will cause the network PCI will decrease from 79.23, the condition entering 2020, to 58.73 in 2029. Without any repairs, the network PCI will fall to 52.35 after 10 years.

See Appendix B for a complete listings of Scenario 1 results:

- Table B1: Annual repair cost (with 3.2% annual inflation).
- Table B2: Network Pavement Condition Index, total miles treated, and total annual cost by year.
- Table B3: Annual cost by repair treatment by year.
- Table B4: Repair details by year.

B FORECASTING SCENARIO 2: MAINTAIN 80 PCI – UNLIMITED SPENDING

Repair Treatments:

- **Shim and Overlay**
 - Shim and Hot Mix Asphalt (HMA) overlay (2" total depth)
 - \$9.56 per YD²
- **Full Depth Reclamation (FDR)**
 - Full Depth Reclamation (FDR) and HMA (4")
 - \$17.76 per YD²
- **Patching**
 - Digout and Hot Patch
 - \$0.75 per FT²

In this scenario, we assigned repairs to road segments within a 10-year horizon with the goal of maintaining a network PCI of 80 using an unlimited budget. Maintaining a network PCI average of 80 requires selecting many roads for repair each year. It is necessary to spend \$750,000 the first year and up to \$4,000,000 in subsequent years to maintain a network PCI of 80.

We attempted to follow the strategy outlined in Scenario 1 for assigning repairs. This strategy was to select road segments in adjacent areas for shim and overlay repairs (the town's preferred repair treatment) within the same year to minimize mobilization costs. However, because maintaining a network PCI of 80 requires repairing numerous roads each year throughout the town, this strategy failed. Instead, we selected roads for repair from all over town within a given year.

See Appendix C for a complete listings of Scenario 2 results:

- Table C1: Annual repair cost (with 3.2% annual inflation).
- Table C2: Network Pavement Condition Index, total miles treated, and total annual cost by year.
- Table C3: Annual cost by repair treatment by year.
- Table C4: Repair details by year.

7.0 CONCLUSION

A FORECASTING SCENARIO 1: \$750,000 ANNUAL SPENDING PER YEAR

This forecasting scenario used a smooth annual budget of \$750,000 to assign road repairs over the 10-year planning horizon. The goal of this scenario was to achieve the best possible pavement conditions given the annual budget constraint. The maintenance strategies proposed in this scenario may be used to guide road maintenance activities during the next 10 years in Hudson, but they do not supplement or replace local knowledge and expertise of the Hudson DPW. Additionally, these strategies may need to be modified in the future due to unforeseen events, changes in technologies, and other factors. Regardless of how the future unfolds, the data presented in this scenario (as well as throughout the report and its supplementary materials) will still be of value in informing the town's decision-making process.

Specifically, Appendix A, which contains a list of 0.25-mile road segments with current PCI, will be of value to the town for selecting roads in most need of repair by condition even if the Town does not follow the maintenance regime outlined in this scenario. This list also contains a priority value for each segment. Priority value is determined using several variables including roadway importance, traffic, and condition. This value can also be used by the town to prioritize roads for repairs.

This scenario also provides data that town officials can use to communicate both current and future pavement condition. Future pavement condition factors heavily on the amount of funding allocated for maintenance, and under current levels of spending (\$750,000 per year), the network PCI in Hudson will fall from 79.23, the condition entering 2020, to 58.73 in 2029. In order to maintain pavement in its current condition, it will be necessary to increase spending on maintenance. The data contained in this scenario can be used to communicate that need to decision-makers in order to leverage greater funding.

B FORECASTING SCENARIO 2: MAINTAIN 80 PCI – UNLIMITED SPENDING

This forecasting scenario used an unlimited budget in order to maintain an approximate network PCI of 80 over the 10-year planning horizon. Unlike Scenario 1, which presents a relatively realistic option for maintenance, Scenario 2 did not produce a realistic approach for future road maintenance.

In Scenario 2, we found that in order to maintain a network PCI of 80, it is necessary to spend approximately \$31,000,000 over 10 years, over four times the current budget. Also, approximately 15-20 miles of roads must be repaired each year. This quantity of repairs is generally unrealistic, and it requires selecting roads from all over town to repair within a single year. Mobilization and moving equipment between job sites will likely raise the project budget further.

One key reason why this analysis scenario did not produce realistic results is because of the types of pavement repairs we used. These types of repairs were chosen based on Hudson DPW preferences. Each type of pavement repair is appropriate for pavement in a specific condition. Some repair types, such as crack seal, are designed to treat pavement that is already in good condition and prolong its life. Other types of repairs, such as full depth reclamation (FDR), are appropriate for pavement that has deteriorated to poor condition.

In our analyses, we used three repair treatments: shim and overlay, FDR, and patching. Shim and overlay is generally appropriate for pavement with a PCI of around 70. FDR and patching are generally appropriate for pavement with a PCI around 50 or less. Using only these repairs, it is difficult to both keep the network PCI at 80 and to apply repair treatments at the appropriate conditional threshold. Additionally, these treatments are not always the least cost alternative. For better results, we recommend using pavement preservation treatments that are designed to treat pavement with a PCI above 80. These treatments include crack seal, sand seal, and fog seal.

For a town like Hudson with an extensive road network, it is not necessary or practical to maintain all roads at a network average of 80 PCI. As an alternate approach, we recommend creating a data subset with only high-importance roads and focusing on maintaining those with a network average of 80 PCI.

APPENDIX A: INITIAL PAVEMENT CONDITIONS:

APPENDIX TABLE A1: PAVEMENT CONDITION INDEX AND PRIORITY SEGMENT LIST

STREET	Segment ID	Importance Value	Traffic Value	Length (Ft)	Initial PCI	Priority
A St	1	1	1	1841	57.00	23.75
Abbott St	1	1	1	1199	69.72	21.75
Able St	1	1	1	478	62.08	23.75
Adam Dr	1	1	1	1321	90.73	16.25
Adam Dr	2	1	1	1926	85.95	17.50
Adelaide St	1	1	1	1315	80.22	19.00
Adelaide St	2	1	1	1383	80.22	19.00
Allyson Dr	1	1	1	1169	90.73	16.25
Alpha St	1	1	1	636	73.54	20.75
Alpine Ave	1	1	1	1157	72.58	21.00
Alvirne Dr	1	1	1	1321	63.99	23.25
Alvirne Dr	2	1	1	1729	65.90	22.75
Andrews Ave	1	1	1	704	90.73	16.25
Anna Louise Dr	1	1	1	1743	85.00	17.75
Applewood Dr	1	1	1	1078	76.40	20.00
Ash St	1	1	1	416	70.67	21.50
Aspen St	1	1	1	507	87.86	17.00
Atwood Ave	1	1	1	1288	64.94	23.00
B St	1	1	1	1316	74.49	20.50
B St	2	1	1	1674	80.22	19.00
Baker St	1	2	2	1317	79.27	34.25
Baker St	2	2	2	692	75.45	35.25
Barretts Hill Rd	1	2	2	1320	73.54	35.75
Barretts Hill Rd	2	2	2	1320	62.08	38.75
Barretts Hill Rd	3	2	2	1321	84.04	33.00
Barretts Hill Rd	4	2	2	1322	85.00	32.75
Barretts Hill Rd	5	2	2	1322	77.36	34.75
Barretts Hill Rd	6	2	2	1318	80.22	34.00
Barretts Hill Rd	7	2	2	1319	95.50	30.00
Barretts Hill Rd	8	2	2	1319	90.73	31.25
Barretts Hill Rd	9	2	2	1319	95.50	30.00
Barretts Hill Rd	10	2	2	1692	95.50	30.00
Bay St	1	2	2	485	82.13	33.50
Bear Path Ln	1	1	1	1319	83.09	18.25
Bear Path Ln	2	1	1	1319	87.86	17.00
Bear Path Ln	3	1	1	1251	76.40	20.00

STREET	Segment ID	Importance Value	Traffic Value	Length (Ft)	Initial PCI	Priority
Beaver Path	1	1	1	1654	88.81	16.75
Beechwood Rd	1	1	1	1319	95.50	15.00
Beechwood Rd	2	1	1	1320	92.64	15.75
Beechwood Rd	3	1	1	1399	92.64	15.75
Belknap Rd	1	3	3	1320	80.22	49.00
Belknap Rd	2	3	3	1319	74.49	50.50
Belknap Rd	3	4	4	1324	85.95	62.50
Belknap Rd	4	4	4	1321	90.73	61.25
Belknap Rd	5	4	4	1135	87.86	62.00
Belknap Ter	1	1	1	869	80.22	19.00
Berkeley Dr	1	1	1	816	81.18	18.75
Birch St	1	2	2	1529	85.95	32.50
Birdie Ln	1	1	1	783	78.31	19.50
Blackstone St	1	1	1	1390	72.58	21.00
Blueberry Ln	1	2	2	1831	90.73	31.25
Bockes Rd	1	2	2	1318	90.73	31.25
Bockes Rd	2	2	2	1318	95.50	30.00
Bockes Rd	3	2	2	1050	95.50	30.00
Bond St	1	1	1	806	80.22	19.00
Bonnie Ln	1	1	1	1153	65.90	22.75
Boulder Dr	1	1	1	1117	69.72	21.75
Boyd Rd	1	2	2	1321	90.73	31.25
Boyd Rd	2	2	2	1319	95.50	30.00
Boyd Rd	3	2	2	1319	95.50	30.00
Boyd Rd	4	2	2	1470	90.73	31.25
Bradford Cir	1	1	1	1677	82.13	18.50
Breakneck Rd	1	2	2	1327	74.49	35.50
Breakneck Rd	2	2	2	1221	75.45	35.25
Brenton Ave	1	1	1	232	81.18	18.75
Bridle Bridge Rd	1	3	3	907	89.77	46.50
Brightside Dr	1	1	1	1534	66.85	22.50
Brook Dr	1	1	1	1321	85.00	17.75
Brook Dr	2	1	1	967	66.85	22.50
Brookfield Rd	1	1	1	1202	90.73	16.25
Bruce St	1	1	1	705	80.22	19.00
Bungalow Ave	1	1	1	589	79.27	19.25
Burns Hill Rd	1	5	5	1322	63.03	83.50
Burns Hill Rd	2	5	5	1320	76.40	80.00
Burns Hill Rd	3	5	5	1321	67.81	82.25
Burns Hill Rd	4	5	5	1323	95.50	75.00
Burns Hill Rd	5	5	5	1327	95.50	75.00

STREET	Segment ID	Importance Value	Traffic Value	Length (Ft)	Initial PCI	Priority
Burns Hill Rd	6	5	5	1253	92.64	75.75
Burton St	1	1	1	490	80.22	19.00
Bush Hill Rd	1	3	3	1323	71.63	51.25
Bush Hill Rd	2	3	3	1320	82.13	48.50
Bush Hill Rd	3	3	3	1320	83.09	48.25
Bush Hill Rd	4	3	3	1316	75.45	50.25
Bush Hill Rd	5	2	2	1319	74.49	35.50
Bush Hill Rd	6	2	2	1320	77.36	34.75
Bush Hill Rd	7	2	2	1320	79.27	34.25
Bush Hill Rd	8	2	2	1520	76.40	35.00
Bush Hill Rd	9	2	2	1320	75.45	35.25
Bush Hill Rd	10	2	2	1319	85.00	32.75
Bush Hill Rd	11	2	2	884	82.13	33.50
Buswell St	1	2	2	454	87.86	32.00
Butternut St	1	1	1	1165	73.54	20.75
C St	1	1	1	233	51.57	26.50
Campbell Ave	1	5	4	319	78.31	72.50
Campbello St	1	1	1	1140	74.49	20.50
Campbello St	2	1	1	355	60.17	24.25
Campbello St	3	1	1	639	84.04	18.00
Candy Ln	1	1	1	737	53.48	26.00
Canna Path	1	1	1	684	80.22	19.00
Cape Dr	1	1	1	405	85.95	17.50
Cardinal Dr	1	2	2	1246	71.63	36.25
Catalpa Dr	1	1	1	681	90.73	16.25
Cathedral Ln	1	1	1	1247	74.49	20.50
Cedar St	1	1	1	1323	92.64	15.75
Cedar St	2	1	1	751	95.50	15.00
Central St	1	5	5	1308	81.18	78.75
Central St	2	5	5	1185	77.36	79.75
Central St	3	5	5	1553	86.91	77.25
Central St	4	5	5	1362	86.91	77.25
Central St	5	5	5	1321	86.91	77.25
Central St	6	5	5	1466	88.81	76.75
Central St	7	5	5	1226	88.81	76.75
Chagnon Ln	1	1	1	1322	80.22	19.00
Chagnon Ln	2	1	1	1535	80.22	19.00
Chalifoux Rd	1	2	2	1322	74.49	35.50
Chalifoux Rd	2	1	1	954	65.90	22.75
Chapin St	1	1	1	497	59.21	24.50
Charbonneau Dr	1	1	1	744	72.58	21.00

STREET	Segment ID	Importance Value	Traffic Value	Length (Ft)	Initial PCI	Priority
Charles St	1	1	1	487	61.12	24.00
Chase St	1	5	4	1018	85.95	70.50
Chatham St	1	1	1	601	85.95	17.50
Cheney Dr	1	1	1	1322	70.67	21.50
Cheney Dr	2	1	1	761	74.49	20.50
Cherry St	1	1	1	692	73.54	20.75
Chestnut St	1	1	1	576	95.50	15.00
Chiswick Rd	1	1	1	907	70.67	21.50
Christine Dr	1	1	1	840	66.85	22.50
Cin Fre Dr	1	1	1	871	70.67	21.50
Circle Dr	1	1	1	1647	63.03	23.50
Circle Dr	1	1	1	338	80.22	19.00
Clark St	1	1	1	353	78.31	19.50
Clement Rd	1	4	3	1319	74.49	58.50
Clement Rd	2	4	3	1321	62.08	61.75
Clement Rd	3	2	2	1321	63.03	38.50
Clement Rd	4	2	2	1320	82.13	33.50
Clement Rd	5	2	2	998	82.13	33.50
Cliff Ave	1	1	1	605	95.50	15.00
Clifton St	1	1	1	259	85.95	17.50
Coll St	1	1	1	396	56.35	25.25
Colson Rd	1	1	1	606	84.04	18.00
Commercial St	1	1	1	843	70.67	21.50
Common St	1	1	1	541	64.94	23.00
Connell St	1	1	1	761	92.64	15.75
Constitution Dr	1	1	1	1318	85.00	17.75
Constitution Dr	2	1	1	1161	83.09	18.25
Copeland Dr	1	1	1	1319	85.95	17.50
Copeland Dr	2	1	1	1842	72.58	21.00
Copper Hill Rd	1	1	1	1172	83.09	18.25
Cottage St	1	1	1	242	62.08	23.75
Cottonwood Dr	1	1	1	1318	72.58	21.00
Cottonwood Dr	2	1	1	1628	79.27	19.25
County Rd	1	3	3	1384	80.22	49.00
Crestwood Dr	1	2	2	1318	87.86	32.00
Crestwood Dr	2	2	2	940	85.00	32.75
Cross St	1	2	2	1127	79.27	34.25
Cummings St	1	2	2	1027	80.22	34.00
Cutler Rd	1	2	2	1155	84.04	33.00
D St	1	1	1	505	90.73	16.25
Daniel Webster Dr	1	1	1	1803	80.22	19.00

STREET	Segment ID	Importance Value	Traffic Value	Length (Ft)	Initial PCI	Priority
David Dr	1	2	2	1320	87.86	32.00
David Dr	2	2	2	1954	95.50	30.00
Daw St	1	2	2	490	86.91	32.25
Deblo Dr	1	1	1	1014	68.76	22.00
Deer Run	1	1	1	1094	86.91	17.25
Deerfield Ave	1	1	1	1112	95.50	15.00
Dell Dr	1	1	1	416	74.49	20.50
Demery Rd	1	1	1	834	64.94	23.00
Derry Ln	1	2	2	1321	75.00	36.25
Derry Ln	2	2	2	1317	74.49	35.50
Derry Ln	3	2	2	739	84.04	33.00
Derry Rd	1	5	5	1218	81.18	78.75
Derry Rd	2	5	5	1222	85.95	77.50
Derry Rd	3	5	5	1192	85.95	77.50
Derry Rd	4	5	5	1785	87.86	77.00
Driveway A051	1	4	2	873	74.49	51.50
Dugout Rd	1	2	2	1321	66.85	37.50
Dugout Rd	2	2	2	1727	74.49	35.50
Dumont Rd	1	1	1	789	80.22	19.00
E St	1	1	1	482	74.49	20.50
Eagle Dr	1	1	1	1127	81.18	18.75
East Hill Dr	1	2	2	1796	86.91	32.25
Easy St	1	1	1	473	67.81	22.25
Eayers Pond Rd	1	2	2	1322	64.94	38.00
Eayers Pond Rd	2	2	2	1453	79.27	34.25
Edgar Ct	1	1	1	167	90.73	16.25
Edgewood Dr	1	1	1	1387	85.95	17.50
Elaine St	1	1	1	1359	85.95	17.50
Elder St	1	1	1	506	79.27	19.25
Elm Ave	1	5	5	1482	90.73	76.25
Empire Cir	1	1	1	1167	90.73	16.25
Essex Ave	1	1	1	268	55.39	25.50
Evergreen Dr	1	2	2	1438	83.09	33.25
Executive Dr	1	2	2	1312	83.09	33.25
Executive Dr	2	2	2	955	87.86	32.00
Executive Dr	3	1	1	1322	78.31	19.50
Executive Dr	4	1	1	902	85.00	17.75
F St	1	1	1	635	63.99	23.25
Fairway Dr	1	1	1	1321	78.31	19.50
Fairway Dr	2	1	1	1778	75.45	20.25
Falcon Dr	1	2	2	1856	71.63	36.25

STREET	Segment ID	Importance Value	Traffic Value	Length (Ft)	Initial PCI	Priority
Farmington Dr	1	1	1	1201	85.00	17.75
Federal St	1	1	1	1233	95.50	15.00
Ferry Ave	1	1	1	304	88.81	16.75
Ferry St	1	5	5	1411	85.00	77.75
Ferry St	2	5	5	1438	85.95	77.50
Ferry St	3	5	5	1432	85.95	77.50
Ferry St	4	5	5	1237	90.73	76.25
Ferry St	5	5	5	2024	95.50	75.00
Fir Ln	1	1	1	471	75.45	20.25
First St	1	1	1	722	87.86	17.00
Flagstone Dr	1	3	3	1318	90.73	46.25
Flagstone Dr	2	1	1	1465	82.13	18.50
Flying Rock Rd	1	1	1	1319	90.73	16.25
Flying Rock Rd	2	1	1	1322	85.00	17.75
Flying Rock Rd	3	1	1	1674	87.86	17.00
Forest Cir	1	1	1	411	64.94	23.00
Forest Rd	1	1	1	1319	67.81	22.25
Forest Rd	2	1	1	1051	78.31	19.50
Frenette Dr	1	1	1	1936	74.49	20.50
Friars Dr	1	1	1	1639	73.54	20.75
Friel Golf Rd	1	1	1	1272	85.95	17.50
Fuller Dr	1	1	1	1058	84.04	18.00
Fulton St	1	1	1	778	68.76	22.00
Gabrielle Dr	1	1	1	1320	89.77	16.50
Gabrielle Dr	2	1	1	875	87.86	17.00
Gambia St	1	1	1	562	68.76	22.00
Garrison Farm Rd	1	1	1	1392	67.81	22.25
Gates Ln	1	1	1	647	90.73	16.25
George St	1	2	2	1294	64.94	38.00
Gibson Rd	1	1	1	1319	85.95	17.50
Gibson Rd	2	1	1	1657	84.04	18.00
Gillis St	1	1	1	1188	69.72	21.75
Glen Dr	1	2	2	1321	81.18	33.75
Glen Dr	2	2	2	1321	75.45	35.25
Glen Dr	3	2	2	1321	73.54	35.75
Glen Dr	4	2	2	1289	76.40	35.00
Glenview Dr	1	2	2	1673	75.45	35.25
Gloria Ave	1	2	2	781	63.03	38.50
Glover Brook Ln	1	1	1	1035	84.04	18.00
Gordon St	1	1	1	669	79.27	19.25
Gowing Rd	1	3	3	1323	63.99	53.25

STREET	Segment ID	Importance Value	Traffic Value	Length (Ft)	Initial PCI	Priority
Gowing Rd	2	3	3	1319	58.26	54.75
Gowing Rd	3	3	3	1319	57.00	52.25
Gowing Rd	4	3	3	1319	72.58	51.00
Gowing Rd	5	3	3	1322	69.72	51.75
Gowing Rd	6	3	3	1554	69.72	51.75
Grace Dr	1	1	1	480	71.63	21.25
Grand Ave	1	1	1	1308	57.00	24.25
Granite Hill Rd	1	1	1	623	83.09	18.25
Greeley St	1	4	4	1319	95.50	60.00
Greeley St	2	4	4	1318	90.73	61.25
Greeley St	3	4	4	1321	95.50	60.00
Greeley St	4	4	4	1318	83.09	63.25
Greeley St	5	3	3	1321	84.04	48.00
Greeley St	6	3	3	1322	85.00	47.75
Greeley St	7	3	3	1319	74.49	50.50
Greeley St	8	3	3	1319	80.22	49.00
Greeley St	9	3	3	1647	79.27	49.25
Greenfield Dr	1	1	1	1220	85.95	17.50
Greentrees Dr	1	1	1	980	68.76	22.00
Gregory St	1	1	1	369	90.73	16.25
Griffin Rd	1	2	2	1321	79.27	34.25
Griffin Rd	2	2	2	1321	71.63	36.25
Griffin Rd	3	2	2	1320	81.18	33.75
Griffin Rd	4	2	2	1156	72.58	36.00
Grigas St	1	1	1	284	89.77	16.50
Groves Farm Rd	1	1	1	1389	79.27	19.25
Gulf St	1	1	1	379	89.77	16.50
Hamblett Ave	1	4	4	487	85.95	62.50
Hampshire Dr	1	2	2	1322	85.95	32.50
Hampshire Dr	2	2	2	1031	84.04	33.00
Hartson Cir	1	1	1	1440	74.49	20.50
Harvest View Cir	1	1	1	414	75.45	20.25
Harwood Rd	1	1	1	589	70.67	21.50
Haverhill St	1	1	1	1246	79.27	19.25
Hawkview Rd	1	1	1	1321	78.31	19.50
Hawkview Rd	2	1	1	681	80.22	19.00
Hayley Ct	1	1	1	464	70.67	21.50
Hayward Pl	1	1	1	309	64.94	23.00
Hazelwood Rd	1	1	1	1319	90.73	16.25
Hazelwood Rd	2	1	1	1318	72.58	21.00
Hazelwood Rd	3	1	1	1318	63.99	23.25

STREET	Segment ID	Importance Value	Traffic Value	Length (Ft)	Initial PCI	Priority
Hazelwood Rd	4	1	1	1230	77.36	19.75
Hedgerow Dr	1	1	1	1226	67.81	22.25
Hemlock St	1	1	1	1110	78.31	19.50
Henry Dr	1	1	1	1321	77.36	19.75
Henry Dr	2	1	1	836	80.22	19.00
Heritage Cir	1	1	1	1321	73.54	20.75
Heritage Cir	2	1	1	1321	70.67	21.50
Heritage Cir	3	1	1	1321	84.04	18.00
Heritage Cir	4	1	1	824	71.63	21.25
Hickory St	1	1	1	1636	71.63	21.25
High Pine Dr	1	1	1	684	87.86	17.00
Highland Ave	1	3	3	1325	75.45	50.25
Highland St	2	3	3	1325	84.04	48.00
Highland St	3	3	3	1319	85.95	47.50
Highland St	4	3	3	1317	81.18	48.75
Highland St	5	3	3	1320	81.18	48.75
Highland St	6	3	3	1322	83.09	48.25
Highland St	7	3	3	1323	85.95	47.50
Highland St	8	3	3	673	90.73	46.25
Hilindale Dr	1	1	1	1359	77.36	19.75
Hill St	1	1	1	932	53.48	26.00
Hillside Dr	1	1	1	382	85.95	17.50
Hilltop Dr	1	1	1	487	64.94	23.00
Holly Ln	1	1	1	1201	83.09	18.25
Hopkins Dr	1	1	1	1651	85.95	17.50
Hudson Hills Dr	1	1	1	1015	85.95	17.50
Hummingbird Ln	1	1	1	1057	85.00	17.75
Hunter Ln	1	1	1	1005	85.95	17.50
Hurley St	1	1	1	1346	90.73	16.25
Industrial Dr	1	1	1	1968	95.50	15.00
Ireland St	1	1	1	601	83.09	18.25
Iris Path	1	1	1	449	81.18	18.75
Ironwood Rd	1	1	1	1179	71.63	21.25
Jacqueline St	1	1	1	1050	71.63	21.25
James Way	1	1	1	1320	90.73	16.25
James Way	2	1	1	1320	90.73	16.25
James Way	3	1	1	1727	85.95	17.50
Jeanne St	1	1	1	826	64.94	23.00
Jefferson Dr	1	1	1	1746	75.45	20.25
Jeremy Ln	1	1	1	561	66.85	22.50
Jessica Ln	1	1	1	1014	84.04	18.00

STREET	Segment ID	Importance Value	Traffic Value	Length (Ft)	Initial PCI	Priority
Joan Ave	1	1	1	1435	85.95	17.50
Joseph Ave	1	1	1	320	73.54	20.75
Julie Ln	1	1	1	915	67.81	22.25
Jump Ln	1	1	1	1367	71.63	21.25
Juniper St	1	1	1	554	72.58	21.00
Karas Crossing Dr	1	1	1	1207	90.73	16.25
Kay Ct	1	1	1	628	78.31	19.50
Kenyon St	1	1	1	888	63.99	23.25
Kestral Ln	1	1	1	1101	73.54	20.75
Kienia Rd	1	2	2	1318	56.35	40.25
Kienia Rd	2	2	2	1322	68.76	37.00
Kienia Rd	3	2	2	1319	77.36	34.75
Kienia Rd	4	2	2	1322	71.63	36.25
Kienia Rd	5	2	2	988	66.85	37.50
Kingston Way	1	1	1	1228	76.40	20.00
Kris Ct	1	1	1	436	66.85	22.50
Lampron Rd	1	1	1	736	57.30	25.00
Laurel Landing	1	1	1	733	95.50	15.00
Lawrence Rd	1	2	2	1323	85.95	32.50
Lawrence Rd	2	2	2	1319	85.95	32.50
Lawrence Rd	3	2	2	1320	90.73	31.25
Lawrence Rd	4	2	2	1102	85.95	32.50
Leaor Cir	1	1	1	761	95.50	15.00
Ledge Rd	1	1	1	1324	74.49	20.50
Ledge Rd	2	1	1	1803	61.12	24.00
Lenny Ln	1	1	1	1321	67.81	22.25
Lenny Ln	2	1	1	666	72.58	21.00
Leonard Ave	1	1	1	1037	69.72	21.75
Leslie St	1	2	2	490	77.36	34.75
Library St	1	4	4	1314	78.31	64.50
Library St	2	4	4	744	86.91	62.25
Lilac St	1	1	1	471	73.54	20.75
Lily Ct	1	1	1	406	81.18	18.75
Linda St	1	1	1	1195	70.67	21.50
Linden St	1	1	1	1148	73.54	20.75
Lindsay St	1	1	1	1198	80.22	19.00
Lions Ave	1	1	1	1048	81.18	18.75
Little Hales Ln	1	1	1	628	76.40	20.00
Locust St	1	1	1	483	78.31	19.50
Lois Dr	1	2	2	550	85.00	32.50
Lorraine St	1	1	1	1127	85.95	17.50

STREET	Segment ID	Importance Value	Traffic Value	Length (Ft)	Initial PCI	Priority
Lovewell St	1	1	1	464	83.09	18.25
Lowell Rd	1	5	5	1522	79.27	79.25
Lowell Rd	2	5	5	1842	79.27	79.25
Lowell Rd	3	5	5	1756	70.00	80.50
Lowell Rd	4	5	5	1499	80.22	79.00
Lowell Rd	5	5	5	1187	85.95	77.50
Lowell Rd	6	5	5	1365	83.09	78.25
Lowell Rd	7	5	5	1216	79.27	79.25
Lowell Rd	8	5	5	1321	81.18	78.75
Lucier Park Dr	1	1	1	812	95.50	15.00
Lund Dr	1	1	1	1320	69.72	21.75
Lund Dr	2	1	1	1322	77.36	19.75
Lund Dr	3	1	1	1578	77.36	19.75
Maccann Rd	1	1	1	893	87.86	17.00
Madison Dr	1	1	1	1821	63.99	23.25
Magnolia St	1	1	1	293	80.22	19.00
Mallard Dr	1	1	1	1636	76.40	20.00
Manny Ct	1	1	1	440	74.49	20.50
Maple Ave	1	1	1	1062	51.57	26.50
Marie Ln	1	1	1	848	64.94	23.00
Mark St	1	1	1	1466	83.09	18.25
Marsh Rd	1	2	2	1318	72.58	36.00
Marsh Rd	2	2	2	1109	64.94	38.00
Marshall St	1	1	1	756	85.95	17.50
Marshmallow Path	1	1	1	487	75.45	20.25
Maureen Ln	1	1	1	863	76.40	20.00
Maywood St	1	1	1	257	74.49	20.50
Mccrady Dr	1	1	1	644	60.17	24.25
Mckinney Dr	1	1	1	1339	85.95	17.50
Meadow Dr	1	1	1	1505	74.49	20.50
Meadowlark Dr	1	1	1	1400	72.58	21.00
Megan Dr	1	1	1	732	74.49	20.50
Melba Dr	1	1	1	1319	73.54	20.75
Melba Dr	2	1	1	1198	75.45	20.25
Melendy Rd	1	3	3	1321	85.95	47.50
Melendy Rd	2	3	3	1320	85.95	47.50
Melendy Rd	3	3	3	1318	85.95	47.50
Melendy Rd	4	3	3	1841	83.09	48.25
Memorial Dr	1	1	1	1550	81.18	18.75
Merrill St	1	1	1	595	68.76	22.00
Merrimack St	1	1	1	1137	69.72	21.75

STREET	Segment ID	Importance Value	Traffic Value	Length (Ft)	Initial PCI	Priority
Mockingbird Ln	1	1	1	1096	70.67	21.50
Monroe Dr	1	1	1	406	69.72	21.75
Monroe Dr	2	1	1	512	80.22	19.00
Moose Hill Rd	1	1	1	1372	95.50	15.00
Mountain View Dr	1	1	1	1834	70.67	21.50
Muldoon Dr	1	1	1	1477	87.86	17.00
Musquash Rd	1	3	3	1320	75.45	50.25
Musquash Rd	2	3	3	1320	75.45	50.25
Musquash Rd	3	3	3	1321	73.54	50.75
Musquash Rd	4	3	3	1319	88.81	46.75
Musquash Rd	5	3	3	1318	84.04	48.00
Musquash Rd	6	3	3	1320	84.04	48.00
Musquash Rd	7	3	3	1320	85.95	47.50
Musquash Rd	8	3	3	1320	74.49	50.50
Musquash Rd	9	3	3	1440	71.63	51.25
Nathaniel Dr	1	2	2	1321	79.27	34.25
Nathaniel Dr	2	2	2	1069	79.27	34.25
Nevens St	1	1	1	1061	71.63	21.25
Newland Ave	1	1	1	490	72.58	21.00
Newton St	1	1	1	580	89.77	16.50
NH 111 EB On ramp (Ferry St)	1	4	4	242	88.81	61.75
Nobby Ln	1	1	1	383	62.08	23.75
Noel St	1	1	1	339	72.58	21.00
North Ridge Rd	1	1	1	1142	85.00	17.75
Nottingham St	1	2	2	777	80.22	34.00
Oak Ave	1	1	1	486	75.45	20.25
Oakwood St	1	1	1	1032	85.00	17.75
Oban Dr	1	1	1	1623	67.81	22.25
Old Coach Rd	1	1	1	1320	89.77	16.50
Old Coach Rd	2	1	1	1496	85.00	17.75
Old Derry Rd	1	3	3	1321	90.73	46.25
Old Derry Rd	1	3	3	1320	95.50	45.00
Old Derry Rd	2	3	3	1955	85.95	47.50
Old Derry Rd	2	3	3	1321	95.50	45.00
Old Derry Rd	3	3	3	1321	90.73	46.25
Old Derry Rd	4	3	3	1320	95.50	45.00
Old Derry Rd	5	3	3	1319	85.95	47.50
Old Derry Rd	6	3	3	1318	85.95	47.50
Old Derry Rd	7	3	3	1320	85.95	47.50
Old Derry Rd	8	3	3	1131	90.73	46.25

STREET	Segment ID	Importance Value	Traffic Value	Length (Ft)	Initial PCI	Priority
Old Landfill Rd	1	3	3	1348	95.50	45.00
Old Robinson Rd	1	1	1	1204	95.50	15.00
Oliver Dr	1	1	1	1649	85.95	17.50
Orchard Park Ln	1	1	1	1538	95.50	15.00
Page Rd	1	1	1	431	72.58	21.00
Paget Dr	1	1	1	606	80.22	19.00
Par Ln	1	1	1	1320	80.22	19.00
Par Ln	2	1	1	1041	79.27	19.25
Paradise Ln	1	1	1	1180	83.09	18.25
Park Ave	1	2	2	1822	95.50	30.00
Parker Dr	1	1	1	1797	83.09	18.25
Parkhurst Dr	1	2	2	1864	71.63	36.25
Pasture Dr	1	1	1	1321	75.45	20.25
Pasture Dr	2	1	1	1026	67.81	22.25
Patricia Dr	1	2	2	1644	84.04	33.00
Paula Cir	1	1	1	489	87.86	17.00
Pelham Rd	1	4	3	1321	95.50	53.00
Pelham Rd	2	3	3	1318	95.50	45.00
Pelham Rd	3	3	3	1320	95.50	45.00
Pelham Rd	4	3	3	1320	95.50	45.00
Pelham Rd	5	3	3	1320	95.50	45.00
Pelham Rd	6	3	3	1230	95.50	45.00
Philbrick St	1	2	2	1656	83.09	33.25
Phillips Dr	1	2	2	944	66.85	37.50
Pine Rd	1	2	2	1320	90.73	31.25
Pine Rd	2	2	2	1320	90.73	31.25
Pine Rd	3	2	2	1320	95.50	30.00
Pine Rd	4	2	2	1320	95.50	30.00
Pine Rd	5	2	2	833	95.50	30.00
Pinedale Ave	1	1	1	418	74.49	20.50
Pinewood Rd	1	1	1	1320	79.27	19.25
Pinewood Rd	2	1	1	1319	74.49	20.50
Pinewood Rd	3	1	1	1848	63.03	23.50
Plaza Ave	1	1	1	1748	64.94	23.00
Pleasant St	1	2	2	305	62.08	38.75
Ponderosa Dr	1	2	2	1710	88.81	31.75
Porter Ave	1	1	1	726	77.36	19.75
Potter Rd	1	1	1	1458	74.49	20.50
Prince Dr	1	1	1	655	79.27	19.25
Pulpit Cir	1	1	1	884	73.54	20.75
Putnam Rd	1	2	2	1321	77.36	34.75

STREET	Segment ID	Importance Value	Traffic Value	Length (Ft)	Initial PCI	Priority
Putnam Rd	2	2	2	892	84.04	33.00
Radcliffe Dr	1	2	2	1347	61.12	39.00
Rangers Dr	1	2	2	1321	67.81	37.25
Rangers Dr	2	2	2	1321	81.18	33.75
Rangers Dr	3	2	2	1321	92.64	30.75
Rangers Dr	4	1	1	914	92.64	15.75
Raven Dr	1	1	1	950	69.72	21.75
Rayes Dr	1	1	1	614	65.90	22.75
Raymond St	1	1	1	773	71.63	21.25
Rebecca Cir	1	1	1	1105	95.50	15.00
Rebel Rd	1	1	1	1042	59.21	24.50
Redwood Rd	1	1	1	878	90.73	16.25
Reed St	1	1	1	950	65.90	22.75
Rega Ave	1	1	1	1402	87.86	17.00
Regina Ave	1	1	1	924	57.30	25.00
Rena Ave	1	1	1	1324	85.00	17.75
Rena Ave	2	1	1	1389	85.95	17.50
Rhona St	1	1	1	498	54.44	25.75
Richman Dr	1	1	1	1320	70.67	21.50
Richman Dr	2	1	1	1548	72.58	21.00
Rickey Dr	1	1	1	464	51.57	26.50
Ridge Ave	1	1	1	643	85.00	17.75
Ridgecrest Dr	1	1	1	1718	85.00	17.75
Rita Ave	1	1	1	1542	74.49	20.50
Riverside Dr	1	1	1	1325	66.85	22.50
Riverside Dr	2	1	1	864	79.27	19.25
Riverview St	1	2	2	763	95.50	30.00
Robin Dr	1	2	2	1319	77.36	34.75
Robin Dr	2	2	2	1320	65.90	37.75
Robin Dr	3	2	2	853	78.31	34.50
Robinson Rd	1	2	2	1321	77.36	34.75
Robinson Rd	2	2	2	1338	71.63	36.25
Robinson Rd	3	3	3	1398	85.95	47.50
Robinson Rd	4	3	3	1380	85.95	47.50
Robinson Rd	5	3	3	1471	81.18	48.75
Robinson Rd	6	3	3	1326	89.77	46.50
Robinson Rd	7	3	3	1418	85.95	47.50
Robinson Rd	8	3	3	1289	89.77	46.50
Robinson Rd	9	3	3	1438	85.00	47.75
Robinson Rd	10	3	3	1402	85.00	47.75
Robinson Rd	11	3	3	1501	90.73	46.25

STREET	Segment ID	Importance Value	Traffic Value	Length (Ft)	Initial PCI	Priority
Robinson Rd	12	3	3	1265	85.95	47.50
Robinson Rd	13	3	3	1229	84.04	48.00
Robo Dr	1	1	1	904	57.30	25.00
Rolling Woods Dr	1	1	1	1197	95.50	15.00
Roosevelt Ave	1	2	2	1758	82.13	33.50
Rose Dr	1	1	1	843	83.09	18.25
Rosemary Ct	1	1	1	601	87.86	17.00
Roy Dr	1	1	1	1832	92.64	15.75
Sagamore Park Rd	1	1	1	1319	52.53	26.25
Sagamore Park Rd	2	1	1	1320	66.85	22.50
Sagamore Park Rd	3	1	1	667	73.54	20.75
Saint Anthony Dr	1	1	1	1318	63.99	23.25
Saint Anthony Dr	2	1	1	886	76.40	20.00
Saint Francis Pl	1	1	1	1839	85.00	17.75
Saint John St	1	1	1	410	89.77	16.50
Saint Laurent Dr	1	2	2	1321	64.94	38.00
Saint Laurent Dr	2	2	2	1823	64.94	38.00
Saint Mary Dr	1	1	1	1189	74.49	20.50
Sand Hill Rd	1	1	1	1782	67.81	22.25
Sandalwood Rd	1	1	1	1320	77.36	19.75
Sandalwood Rd	2	1	1	877	76.40	20.00
Sanders Rd	1	3	3	1698	77.36	49.75
Savin St	1	1	1	194	76.40	20.00
Scenic Ln	1	1	1	929	87.86	17.00
Schaeffer Cir	1	1	1	1322	74.49	20.50
Schaeffer Cir	2	1	1	1320	83.09	18.25
Schaeffer Cir	3	1	1	1320	77.36	19.75
Schaeffer Cir	4	1	1	1319	79.27	19.25
Schaeffer Cir	5	1	1	1643	81.18	18.75
School St	1	5	4	1320	88.81	69.75
School St	2	5	2	1104	72.58	60.00
Second St	1	1	1	1180	87.86	17.00
Security Dr	1	1	1	1096	72.58	21.00
Senter Farm Rd	1	1	1	1437	85.00	17.75
Senter Farm Rd	2	1	1	1650	85.00	17.75
Serenity Cir	1	1	1	782	87.86	17.00
Sheffield St	1	1	1	1319	89.77	16.50
Sheffield St	2	1	1	1150	89.77	16.50
Shelley Dr	1	1	1	1416	63.99	23.25
Sheraton Dr	1	1	1	659	71.63	21.25
Sherburne Rd		3	3	824	95.50	45.00

STREET	Segment ID	Importance Value	Traffic Value	Length (Ft)	Initial PCI	Priority
Shingle Mill Rd	1	1	1	462	85.95	17.50
Shoreline Dr	1	1	1	1905	87.86	17.00
Short St	1	1	1	715	82.13	18.50
Sir Isaac Way	1	1	1	662	75.45	20.25
Somerset Dr	1	1	1	1378	73.54	20.75
Sousa Blvd	1	1	1	1319	69.72	21.75
Sousa Blvd	2	1	1	1322	84.04	18.00
Sousa Blvd	3	1	1	1323	84.04	18.00
Sousa Blvd	4	1	1	705	82.13	18.50
Speare Rd	1	3	3	1320	79.27	49.25
Speare Rd	2	3	3	1319	81.18	48.75
Speare Rd	3	3	3	1319	72.58	51.00
Speare Rd	4	3	3	1320	70.67	51.50
Speare Rd	5	3	3	1474	77.36	49.75
Springwood Cir	1	1	1	1321	76.40	20.00
Springwood Cir	2	1	1	1426	79.27	19.25
Spruce St	1	1	1	1106	67.81	22.25
Stable Dr	1	1	1	923	89.77	16.50
Stanley Ave	1	1	1	473	81.18	18.75
State St	1	1	1	551	95.50	15.00
Steele Rd	1	1	1	1317	71.63	21.25
Steele Rd	2	1	1	663	75.45	20.25
Stevens Dr	1	1	1	1025	84.04	18.00
Stonemill Dr	1	1	1	358	64.94	23.00
Stonewood Ln	1	1	1	1321	75.45	20.25
Stonewood Ln	2	1	1	1271	74.49	20.50
Stoney Ln	1	1	1	1319	74.49	20.50
Stoney Ln	2	1	1	1382	79.27	19.25
Stuart St	1	1	1	628	66.85	22.50
Sullivan Rd	1	2	2	1319	71.63	36.25
Sullivan Rd	2	2	2	1323	73.54	35.75
Sullivan Rd	3	2	2	1319	75.45	35.25
Sullivan Rd	4	2	2	1319	83.09	33.25
Sullivan Rd	5	2	2	1323	73.54	35.75
Sullivan Rd	6	1	1	1540	78.31	19.50
Summer Ave	1	1	1	672	71.63	21.25
Sunflower Path	1	1	1	162	71.63	21.25
Sunland Dr	1	2	2	1317	72.58	36.00
Sunland Dr	2	2	2	1356	70.67	36.50
Sunrise Dr	1	2	2	1531	85.95	32.50
Sunshine Dr	1	1	1	1166	87.86	17.00

STREET	Segment ID	Importance Value	Traffic Value	Length (Ft)	Initial PCI	Priority
Sutherland Dr	1	1	1	1321	85.00	17.75
Sutherland Dr	2	1	1	1008	82.13	18.50
Sycamore St	1	1	1	1455	71.63	21.25
Tamarack St	1	1	1	1441	61.12	24.00
Tate St	1	1	1	931	70.67	21.50
Tear Drop Cir	1	1	1	464	63.99	23.25
Teloian Dr	1	1	1	1058	71.63	21.25
Teloian Dr	2	1	1	1150	80.22	19.00
Terra Ln	1	1	1	1360	75.45	20.25
Tessier St	1	1	1	874	85.95	17.50
Third St	1	1	1	804	83.09	18.25
Thorning Rd	1	4	3	797	76.40	58.00
Thurstons Dr	1	1	1	1198	78.31	19.50
Tiger Rd	1	1	1	426	70.67	21.50
Timber Ln	1	1	1	240	68.76	22.00
Timothy Ln	1	1	1	1362	54.44	25.75
Tolles St	1	1	1	748	74.49	20.50
Towhee Dr	1	1	1	1688	80.22	19.00
Tracy Ln	1	1	1	1506	61.12	24.00
Travers St	1	1	1	700	83.09	18.25
Trigate Rd	1	1	1	1320	67.81	22.25
Trigate Rd	2	1	1	1321	80.22	19.00
Trigate Rd	3	1	1	1790	75.45	20.25
Twin Meadow Dr	1	1	1	1710	69.72	21.75
Vernon St	1	1	1	695	82.13	18.50
Vinton St	1	1	1	650	78.31	19.50
Virginia Dr	1	2	2	793	82.13	33.50
Wade Rd	1	2	2	1232	82.13	33.50
Wagner Way	1	1	1	1571	85.00	17.75
Walnut St	1	1	1	1060	75.45	20.25
Washington St	1	2	2	1521	77.36	34.75
Wason Rd	1	4	4	1321	82.13	63.50
Wason Rd	2	4	4	1319	85.00	62.75
Wason Rd	3	4	4	1319	81.18	63.75
Wason Rd	4	4	4	1320	95.50	60.00
Wason Rd	5	4	4	1319	85.00	62.75
Wason Rd	6	4	4	1318	85.95	62.50
Wason Rd	7	4	4	1319	83.09	63.25
Wason Rd	8	4	4	1319	75.45	65.25
Wason Rd	9	4	4	1319	83.09	63.25
Wason Rd	10	4	4	1318	72.58	66.00

STREET	Segment ID	Importance Value	Traffic Value	Length (Ft)	Initial PCI	Priority
Wason Rd	11	4	4	781	85.95	62.50
Water St	1	1	1	639	84.04	18.00
Waterlilly Path	1	1	1	403	81.18	18.75
Watersedge Dr	1	1	1	943	95.50	15.00
Watts Cir	1	1	1	510	83.09	18.25
Wayne St	1	1	1	1092	88.81	16.75
Webster St	1	2	2	1318	83.09	33.25
Webster St	2	2	2	1321	83.09	33.25
Webster St	3	2	2	1322	90.73	31.25
Webster St	4	2	2	1321	90.73	31.25
Webster St	5	1	1	1019	78.31	19.50
Webster St	6	1	1	207	72.58	21.00
Wende Dr	1	2	2	1318	76.40	35.00
Wende Dr	2	2	2	695	80.22	34.00
Wentworth Dr	1	1	1	1310	83.09	18.25
West Rd	1	3	3	1318	75.45	50.25
West Rd	2	3	3	695	74.49	50.50
Westchester Ct	1	1	1	1278	80.22	19.00
Whip Poor Will Dr	1	1	1	346	87.86	17.00
Wildwood Ter	1	1	1	1486	86.91	17.25
Williams Dr	1	1	1	1318	85.95	17.50
Williams Dr	2	1	1	775	90.73	16.25
Willow St	1	1	1	608	68.76	22.00
Windham Rd	1	3	3	1319	77.36	49.75
Windham Rd	2	3	3	1320	71.63	51.25
Windham Rd	3	3	3	1320	76.40	50.00
Windham Rd	4	3	3	1320	80.22	49.00
Windham Rd	5	3	3	994	79.27	49.25
Winding Hollow Rd	1	1	1	1831	85.00	17.75
Winn Ave	1	1	1	602	79.27	19.25
Winnhaven Dr	1	2	2	1318	81.18	33.75
Winnhaven Dr	2	2	2	1514	90.73	31.25
Winslow Farm Rd	1	2	2	1320	71.63	36.25
Winslow Farm Rd	2	2	2	1321	81.18	33.75
Winslow Farm Rd	3	2	2	887	66.85	37.50
Wissahickon Dr	1	1	1	948	80.22	19.00
Woodcrest Dr	1	1	1	1316	66.85	22.50
Woodcrest Dr	2	1	1	1473	58.26	24.75
Woodland Dr	1	1	1	1142	80.22	19.00
Woodridge Dr	1	1	1	1505	85.00	17.75
Wyeth Dr	1	1	1	448	85.95	17.50

STREET	Segment ID	Importance Value	Traffic Value	Length (Ft)	Initial PCI	Priority
York Dr	1	1	1	470	65.90	22.75
York Dr	2	1	1	842	95.50	15.00
Youngs Dr	1	1	1	312	69.72	21.75

APPENDIX B SCENARIO 1. ANALYSIS RESULTS (TABLES):

APPENDIX TABLE B1: ANNUAL REPAIR COST

Year	Cost
2020	\$757,062
2021	\$752,211
2022	\$750,083
2023	\$759,631
2024	\$776,807
2025	\$758,293
2026	\$753,714
2027	\$740,998
2028	\$726,437
2029	\$749,821
	\$7,525,055

APPENDIX TABLE B2: NETWORK PAVEMENT CONDITION INDEX AND COST BY YEAR

	2020	2021	2022	2023	2024	2025	2026	2027	2028	2029
Average PCI After Repairs	80.24	77.09	74.33	71.58	68.91	66.47	64.36	62.41	60.47	58.73
Average PCI Without Repairs	79.23	75.67	72.26	69.01	65.91	62.94	60.11	57.40	54.82	52.35
Total Miles Treated	4.71	2.94	3.97	3.40	3.04	2.84	3.63	3.99	3.47	3.33
Total Repair Cost	\$757,062	\$752,211	\$750,083	\$759,631	\$776,807	\$758,293	\$753,714	\$740,998	\$726,437	\$749,821

APPENDIX TABLE B3: COST BY REPAIR TREATMENT BY YEAR

	2020	2021	2022	2023	2024	2025	2026	2027	2028	2029
Shim and Overlay	\$548,332	\$700,077	\$720,197	\$609,963	\$732,618	\$709,367	\$685,760	\$706,437	\$686,454	\$472,685
Patching	\$64,352	\$0	\$29,886	\$0	\$0	\$48,926	\$6,649	\$34,560	\$39,983	\$117,272
Full Depth Reclamation	\$144,378	\$52,134	\$0	\$149,668	\$44,188	\$0	\$61,305	\$0	\$0	\$159,864

APPENDIX TABLE B4: REPAIR DETAIL BY YEAR

Year	Street	Segment ID	Miles Treated	Repair	Cost
2020	Burns Hill Rd	1	0.25	Shim and Overlay	\$35,040
	Burns Hill Rd	2	0.25	Shim and Overlay	\$35,003
	Burns Hill Rd	3	0.25	Shim and Overlay	\$35,015
	C St	1	0.04	Digout and Hot Patch	\$3,642
	Candy Ln	1	0.14	FDR	\$39,307
	Clement Rd	1	0.25	Shim and Overlay	\$36,420
	Clement Rd	2	0.25	Shim and Overlay	\$36,484
	Clement Rd	3	0.25	Shim and Overlay	\$35,024
	Glen Dr	2	0.25	Shim and Overlay	\$42,322
	Glen Dr	3	0.25	Shim and Overlay	\$42,323
	Glen Dr	4	0.24	Shim and Overlay	\$41,305
	Kienia Rd	1	0.25	Shim and Overlay	\$36,402
	Kienia Rd	2	0.25	Shim and Overlay	\$36,515
	Kienia Rd	3	0.25	Shim and Overlay	\$36,421
	Mccrady Dr	1	0.12	FDR	\$30,378
	Parkhurst Dr	1	0.35	Shim and Overlay	\$53,544
	Rebel Rd	1	0.20	FDR	\$53,452
	Regina Ave	1	0.17	Shim and Overlay	\$30,618
	Rickey Dr	1	0.09	Shim and Overlay	\$15,894
	Sagamore Park Rd	1	0.25	Digout and Hot Patch	\$27,784
Timothy Ln	1	0.26	Digout and Hot Patch	\$32,925	
York Dr	1	0.09	FDR	\$21,241	
Total for Year 2020			4.17		\$757,062

Year	Street	Segment ID	Miles Treated	Repair	Cost
2021	Charbonneau Dr	1	0.14	Shim and Overlay	\$25,630
	Lowell Rd	1	0.29	Shim and Overlay	\$115,438
	Lowell Rd	2	0.35	Shim and Overlay	\$139,676
	Lowell Rd	3	0.33	Shim and Overlay	\$121,070

	Lowell Rd	4	0.28	Shim and Overlay	\$87,844
	Maple Ave	1	0.20	FDR	\$52,134
	Rhona St	1	0.09	Shim and Overlay	\$14,886
	Wason Rd	1	0.25	Shim and Overlay	\$37,933
	Wason Rd	3	0.25	Shim and Overlay	\$39,397
	Wason Rd	8	0.25	Shim and Overlay	\$39,409
	Wason Rd	9	0.25	Shim and Overlay	\$39,409
	Wason Rd	10	0.25	Shim and Overlay	\$39,385
	Total for Year 2021		2.94		\$752,211

Year	Street	Segment ID	Miles Treated	Repair	Cost
2022	Barretts Hill Rd	1	0.25	Shim and Overlay	\$41,021
	Barretts Hill Rd	2	0.25	Shim and Overlay	\$40,992
	Barretts Hill Rd	5	0.25	Shim and Overlay	\$36,338
	Barretts Hill Rd	6	0.25	Shim and Overlay	\$36,228
	Coll St	1	0.07	Digout and Hot Patch	\$7,011
	County Rd	1	0.26	Shim and Overlay	\$47,944
	Lowell Rd	5	0.22	Shim and Overlay	\$70,885
	Lowell Rd	6	0.26	Shim and Overlay	\$63,625
	Lowell Rd	7	0.23	Shim and Overlay	\$58,133
	Lowell Rd	8	0.25	Shim and Overlay	\$82,101
	Rangers Dr	1	0.25	Shim and Overlay	\$41,047
	Rangers Dr	2	0.25	Shim and Overlay	\$41,041
	Robo Dr	1	0.17	Digout and Hot Patch	\$22,875
	Windham Rd	1	0.25	Shim and Overlay	\$39,385
	Windham Rd	2	0.25	Shim and Overlay	\$39,423
	Windham Rd	3	0.25	Shim and Overlay	\$41,019
	Windham Rd	4	0.25	Shim and Overlay	\$41,015
	Total for Year 2022		3.97		\$750,083

Year	Street	Segment ID	Miles Treated	Repair	Cost
2023	Belknap Rd	1	0.25	Shim and Overlay	\$42,653
	Belknap Rd	2	0.25	Shim and Overlay	\$42,603
	Belknap Rd	4	0.25	Shim and Overlay	\$49,237
	Essex Ave	1	0.05	FDR	\$11,745
	Ferry St	1	0.27	Shim and Overlay	\$77,128
	Ferry St	2	0.27	Shim and Overlay	\$71,470
	Ferry St	3	0.27	Shim and Overlay	\$65,826
	Ferry St	4	0.23	Shim and Overlay	\$52,262
	Ferry St	5	0.38	Shim and Overlay	\$77,982
	Grand Ave	1	0.25	FDR	\$90,568
	Hill St	1	0.18	FDR	\$47,355
	Melendy Rd	3	0.25	Shim and Overlay	\$45,867
	Melendy Rd	4	0.35	Shim and Overlay	\$57,192
	Thorning Rd	1	0.15	Shim and Overlay	\$27,744
	Total for Year 2023			3.40	

Year	Street	Segment ID	Miles Treated	Repair	Cost
2024	Brook Dr	1	0.25	Shim and Overlay	\$51,216
	Derry Rd	1	0.23	Shim and Overlay	\$83,446
	Derry Rd	2	0.23	Shim and Overlay	\$102,650
	Derry Rd	3	0.23	Shim and Overlay	\$83,213
	Derry Rd	4	0.34	Shim and Overlay	\$131,500
	Elm Ave	1	0.28	Shim and Overlay	\$61,276
	Lampron Rd	1	0.14	FDR	\$44,188
	Musquash Rd	2	0.25	Shim and Overlay	\$37,528
	Musquash Rd	3	0.25	Shim and Overlay	\$40,972
	Musquash Rd	8	0.25	Shim and Overlay	\$40,938
	Musquash Rd	9	0.27	Shim and Overlay	\$42,816
	Sanders Rd	1	0.32	Shim and Overlay	\$57,064
Total for Year 2024			3.04		\$776,807

Year	Street	Segment ID	Miles Treated	Repair	Cost
2025	Campbell Ave	1	0.06	Shim and Overlay	\$13,706
	Central St	1	0.25	Shim and Overlay	\$72,092
	Central St	2	0.22	Shim and Overlay	\$66,904
	Central St	3	0.29	Shim and Overlay	\$93,933
	Central St	4	0.26	Shim and Overlay	\$69,576
	Central St	5	0.25	Shim and Overlay	\$71,033
	Central St	6	0.28	Shim and Overlay	\$100,493
	Central St	7	0.23	Shim and Overlay	\$65,911
	Chase St	1	0.19	Shim and Overlay	\$56,085
	Hamblett Ave	1	0.09	Shim and Overlay	\$11,120
	Library St	1	0.25	Shim and Overlay	\$52,978
	Library St	2	0.14	Shim and Overlay	\$30,005
	NH 111 EB On ramp (Ferry St)	1	0.05	Shim and Overlay	\$5,532
	Woodcrest Dr	2	0.28	Digout and Hot Patch	\$48,926
Total for Year 2025			2.84		\$758,293

Year	Street	Segment ID	Miles Treated	Repair	Cost
2026	Campbello St	2	0.07	Digout and Hot Patch	\$6,649
	Chapin St	1	0.09	FDR	\$29,674
	Charles St	1	0.09	FDR	\$31,631
	Greeley St	4	0.25	Shim and Overlay	\$51,595
	Greeley St	5	0.25	Shim and Overlay	\$48,002
	Greeley St	6	0.25	Shim and Overlay	\$48,034
	Greeley St	7	0.25	Shim and Overlay	\$51,619
	Greeley St	8	0.25	Shim and Overlay	\$51,637
	Greeley St	9	0.31	Shim and Overlay	\$64,479
	Robinson Rd	4	0.26	Shim and Overlay	\$48,210
	Robinson Rd	5	0.28	Shim and Overlay	\$51,410
	Robinson Rd	7	0.27	Shim and Overlay	\$49,541
	Robinson Rd	9	0.27	Shim and Overlay	\$50,247
	Robinson Rd	10	0.27	Shim and Overlay	\$48,978
	Robinson Rd	12	0.24	Shim and Overlay	\$61,895
Robinson Rd	13	0.23	Shim and Overlay	\$60,113	
Total for Year 2026			3.63		\$753,714

Year	Street	Segment ID	Miles Treated	Repair	Cost
2027	Bush Hill Rd	2	0.25	Shim and Overlay	\$47,962
	Bush Hill Rd	3	0.25	Shim and Overlay	\$47,970
	Bush Hill Rd	4	0.25	Shim and Overlay	\$47,813
	Bush Hill Rd	5	0.25	Shim and Overlay	\$47,936
	Bush Hill Rd	6	0.25	Shim and Overlay	\$47,970
	Bush Hill Rd	7	0.25	Shim and Overlay	\$47,965
	Bush Hill Rd	8	0.29	Shim and Overlay	\$55,233
	Bush Hill Rd	9	0.25	Shim and Overlay	\$47,963
	Bush Hill Rd	10	0.25	Shim and Overlay	\$47,930
	Bush Hill Rd	11	0.17	Shim and Overlay	\$32,125
	Radcliffe Dr	1	0.26	Digout and Hot Patch	\$34,560
	Speare Rd	1	0.25	Shim and Overlay	\$46,059
	Speare Rd	2	0.25	Shim and Overlay	\$46,008
	Speare Rd	3	0.25	Shim and Overlay	\$46,018
	Speare Rd	4	0.25	Shim and Overlay	\$46,051
	Speare Rd	5	0.28	Shim and Overlay	\$51,437
Total for Year 2027			3.99		\$740,998

Year	Street	Segment ID	Miles Treated	Repair	Cost
2028	Clement Rd	1	0.25	Shim and Overlay	\$49,843
	Clement Rd	2	0.25	Shim and Overlay	\$49,931
	Clement Rd	3	0.25	Shim and Overlay	\$47,933
	Clement Rd	4	0.25	Shim and Overlay	\$41,897
	Clement Rd	5	0.19	Shim and Overlay	\$31,674
	Hampshire Dr	1	0.25	Shim and Overlay	\$71,932
	Hampshire Dr	2	0.20	Shim and Overlay	\$56,097
	Hayward Pl	1	0.06	Shim and Overlay	\$9,341
	Highland Ave	1	0.25	Shim and Overlay	\$60,102
	Highland St	2	0.25	Shim and Overlay	\$60,085
	Highland St	4	0.25	Shim and Overlay	\$51,787
	Highland St	5	0.25	Shim and Overlay	\$51,873
	Highland St	6	0.25	Shim and Overlay	\$51,968
	Highland St	7	0.25	Shim and Overlay	\$51,990
	Tamarack St	1	0.27	Digout and Hot Patch	\$39,983
Total for Year 2028			3.47		\$726,437

Year	Street	Segment ID	Miles Treated	Repair	Cost
2029	Bradford Cir	1	0.32	FDR	\$142,061
	Driveway A051	1	0.17	Digout and Hot Patch	\$28,096
	Gowing Rd	2	0.25	Digout and Hot Patch	\$38,086
	Granite Hill Rd	1	0.12	Shim and Overlay	\$23,508
	Ledge Rd	1	0.25	Shim and Overlay	\$52,052
	Ledge Rd	2	0.34	Shim and Overlay	\$70,865
	Pelham Rd	1	0.25	Shim and Overlay	\$58,174
	Pelham Rd	2	0.25	Shim and Overlay	\$55,956
	Pelham Rd	3	0.25	Shim and Overlay	\$53,947
	Pelham Rd	4	0.25	Shim and Overlay	\$53,957
	Pelham Rd	5	0.25	Shim and Overlay	\$53,945
	Pelham Rd	6	0.23	Shim and Overlay	\$50,281
	Pleasant St	1	0.06	FDR	\$17,803
	Tracy Ln	1	0.29	Digout and Hot Patch	\$43,479
	Youngs Dr	1	0.06	Digout and Hot Patch	\$7,611
Total for Year 2029			3.33		\$749,821

APPENDIX C SCENARIO 2. ANALYSIS RESULTS (TABLES):

APPENDIX TABLE C1: ANNUAL REPAIR COST

Year	Cost
2020	\$757,062
2021	\$3,384,814
2022	\$2,778,253
2023	\$3,308,701
2024	\$2,911,463
2025	\$3,143,401
2026	\$2,991,520
2027	\$3,576,460
2028	\$3,901,945
2029	\$4,419,628
	\$31,173,247

APPENDIX TABLE C2: NETWORK PAVEMENT CONDITION INDEX AND COST BY YEAR

	2020	2021	2022	2023	2024	2025	2026	2027	2028	2029
Average PCI After Repairs	80.24	80.06	80.07	80.03	80.20	80.16	80.11	80.11	80.03	80.07
Average PCI Without Repairs	79.23	75.67	72.26	69.01	65.91	62.94	60.11	57.40	54.82	52.35
Total Miles Treated	4.71	19.99	18.70	19.05	15.88	18.19	15.01	16.06	14.66	19.74
Total Repair Cost	\$757,062	\$3,384,814	\$2,778,253	\$3,308,701	\$2,911,463	\$3,143,401	\$2,991,520	\$3,576,460	\$3,901,945	\$4,419,628

APPENDIX TABLE C3: COST BY REPAIR TREATMENT BY YEAR

Description	2020	2021	2022	2023	2024	2025	2026	2027	2028	2029
Overlay	\$548,332	\$2,074,539	\$1,635,918	\$2,651,574	\$1,764,101	\$1,785,156	\$1,575,322	\$2,482,153	\$2,767,872	\$3,191,272
Patching	\$64,352	\$1,146,803	\$1,101,481	\$657,127	\$853,326	\$1,032,048	\$721,243	\$551,562	\$522,466	\$477,261
FDR	\$144,378	\$176,557	\$40,855	\$0	\$294,035	\$326,197	\$694,954	\$542,745	\$645,829	\$751,095
Total	\$757,062	\$3,397,899	\$2,778,253	\$3,308,701	\$2,911,463	\$3,143,401	\$2,991,520	\$3,576,460	\$3,936,167	\$4,419,628

APPENDIX TABLE C4: REPAIR DETAIL BY YEAR

Year	Street	Order ID	Repair	Miles Treated	Cost
2020	Burns Hill Rd	1	Shim and Overlay	0.25	\$35,040
	Burns Hill Rd	2	Shim and Overlay	0.25	\$35,003
	Burns Hill Rd	3	Shim and Overlay	0.25	\$35,015
	C St	1	Digout and Hot Patch	0.04	\$3,642
	Candy Ln	1	FDR	0.14	\$39,307
	Clement Rd	1	Shim and Overlay	0.25	\$36,420
	Clement Rd	2	Shim and Overlay	0.25	\$36,484
	Clement Rd	3	Shim and Overlay	0.25	\$35,024
	Glen Dr	2	Shim and Overlay	0.25	\$42,322
	Glen Dr	3	Shim and Overlay	0.25	\$42,323
	Glen Dr	4	Shim and Overlay	0.24	\$41,305
	Kienia Rd	1	Shim and Overlay	0.25	\$36,402
	Kienia Rd	2	Shim and Overlay	0.25	\$36,515
	Kienia Rd	3	Shim and Overlay	0.25	\$36,421
	Mccrady Dr	1	FDR	0.12	\$30,378
	Parkhurst Dr	1	Shim and Overlay	0.35	\$53,544
	Rebel Rd	1	FDR	0.20	\$53,452
	Regina Ave	1	Shim and Overlay	0.17	\$30,618
	Rickey Dr	1	Shim and Overlay	0.09	\$15,894
	Sagamore Park Rd	1	Digout and Hot Patch	0.25	\$27,784
Timothy Ln	1	Digout and Hot Patch	0.26	\$32,925	
York Dr	1	FDR	0.09	\$21,241	
Total for Year 2020				4.71	\$757,062

Year	Street	Order ID	Repair	Miles Treated	Cost
2021	Applewood Dr	1	Digout and Hot Patch	0.20	\$25,357
	Barretts Hill Rd	1	Shim and Overlay	0.25	\$39,443
	Barretts Hill Rd	2	Shim and Overlay	0.25	\$39,416
	Barretts Hill Rd	5	Shim and Overlay	0.25	\$34,940
	Barretts Hill Rd	6	Shim and Overlay	0.25	\$34,835
	Boulder Dr	1	Shim and Overlay	0.21	\$34,653
	Central St	1	Digout and Hot Patch	0.25	\$43,511
	Central St	2	Digout and Hot Patch	0.22	\$40,380
	Central St	3	Digout and Hot Patch	0.29	\$56,693
	Central St	4	Digout and Hot Patch	0.26	\$41,992
	Central St	5	Digout and Hot Patch	0.25	\$42,872
	Central St	6	Digout and Hot Patch	0.28	\$60,652
	Central St	7	Digout and Hot Patch	0.23	\$39,781
	Chalifoux Rd	1	Digout and Hot Patch	0.25	\$26,818
	Chalifoux Rd	2	Digout and Hot Patch	0.18	\$19,355
	Chapin St	1	FDR	0.09	\$24,390
	Charbonneau Dr	1	Shim and Overlay	0.14	\$25,630
	Chiswick Rd	1	Digout and Hot Patch	0.17	\$22,065
	Coll St	1	FDR	0.07	\$17,737
	Cottage St	1	Shim and Overlay	0.05	\$6,403
	County Rd	1	Shim and Overlay	0.26	\$46,100
	Demery Rd	1	Digout and Hot Patch	0.16	\$19,613
	Dugout Rd	1	Shim and Overlay	0.25	\$40,989
	Dugout Rd	2	Shim and Overlay	0.33	\$53,574
	Dumont Rd	1	Digout and Hot Patch	0.15	\$15,365
	Essex Ave	1	FDR	0.05	\$10,859
	Fairway Dr	1	Digout and Hot Patch	0.25	\$31,082
	Fairway Dr	2	Digout and Hot Patch	0.34	\$41,816
	Fulton St	1	Shim and Overlay	0.15	\$29,478
	Gillis St	1	Shim and Overlay	0.22	\$31,390
	Gowing Rd	1	Shim and Overlay	0.25	\$39,528
	Gowing Rd	2	Shim and Overlay	0.25	\$39,414
	Gowing Rd	3	Shim and Overlay	0.25	\$39,407
	Gowing Rd	4	Shim and Overlay	0.25	\$39,415
	Gowing Rd	5	Shim and Overlay	0.25	\$39,481
	Gowing Rd	6	Shim and Overlay	0.29	\$46,421
	Grand Ave	1	Shim and Overlay	0.25	\$45,074
	Hazelwood Rd	2	Shim and Overlay	0.25	\$36,343
	Hazelwood Rd	3	Shim and Overlay	0.25	\$33,326
	Hazelwood Rd	4	Shim and Overlay	0.23	\$31,096
Hill St	1	FDR	0.18	\$43,782	
Hilltop Dr	1	Digout and Hot Patch	0.09	\$8,301	

Year	Street	Order ID	Repair	Miles Treated	Cost
2021	Ironwood Rd	1	Digout and Hot Patch	0.22	\$25,825
	Lowell Rd	1	Shim and Overlay	0.29	\$115,438
	Lowell Rd	2	Shim and Overlay	0.35	\$139,676
	Lowell Rd	3	Shim and Overlay	0.33	\$121,070
	Lowell Rd	4	Shim and Overlay	0.28	\$87,844
	Lowell Rd	5	Shim and Overlay	0.22	\$68,159
	Lowell Rd	6	Shim and Overlay	0.26	\$61,178
	Lowell Rd	7	Shim and Overlay	0.23	\$55,897
	Lowell Rd	8	Shim and Overlay	0.25	\$78,943
	Mallard Dr	1	Digout and Hot Patch	0.31	\$34,496
	Maple Ave	1	FDR	0.20	\$52,134
	Newland Ave	1	Shim and Overlay	0.09	\$11,831
	Par Ln	1	Digout and Hot Patch	0.25	\$32,125
	Par Ln	2	Digout and Hot Patch	0.20	\$25,322
	Pinewood Rd	1	Digout and Hot Patch	0.25	\$33,195
	Pinewood Rd	2	Digout and Hot Patch	0.25	\$32,093
	Pinewood Rd	3	Digout and Hot Patch	0.35	\$44,966
	Pleasant St	1	Shim and Overlay	0.06	\$7,002
	Rangers Dr	1	Shim and Overlay	0.25	\$39,469
	Rangers Dr	2	Shim and Overlay	0.25	\$39,462
	Reed St	1	Shim and Overlay	0.18	\$22,920
	Rhona St	1	FDR	0.09	\$27,655
	Richman Dr	1	Digout and Hot Patch	0.25	\$32,133
	Richman Dr	2	Digout and Hot Patch	0.29	\$37,665
	Sanders Rd	1	Digout and Hot Patch	0.32	\$35,818
	Somerset Dr	1	Digout and Hot Patch	0.26	\$29,058
	Summer Ave	1	Digout and Hot Patch	0.13	\$26,171
	Terra Ln	1	Digout and Hot Patch	0.26	\$35,291
	Tiger Rd	1	Digout and Hot Patch	0.08	\$8,983
	Wason Rd	1	Shim and Overlay	0.25	\$37,933
	Wason Rd	2	Digout and Hot Patch	0.25	\$27,812
	Wason Rd	3	Shim and Overlay	0.25	\$39,397
	Wason Rd	5	Digout and Hot Patch	0.25	\$26,744
	Wason Rd	6	Digout and Hot Patch	0.25	\$27,797
	Wason Rd	7	Shim and Overlay	0.25	\$39,415
	Wason Rd	8	Shim and Overlay	0.25	\$39,409
	Wason Rd	9	Shim and Overlay	0.25	\$39,409
	Wason Rd	10	Shim and Overlay	0.25	\$39,385
	Wason Rd	11	Digout and Hot Patch	0.15	\$16,465
	Windham Rd	1	Shim and Overlay	0.25	\$37,871
Windham Rd	2	Shim and Overlay	0.25	\$37,907	
Windham Rd	3	Shim and Overlay	0.25	\$39,441	

Year	Street	Order ID	Repair	Miles Treated	Cost
2021	Windham Rd	4	Shim and Overlay	0.25	\$39,437
	Windham Rd	5	Shim and Overlay	0.19	\$29,690
	Woodcrest Dr	1	Digout and Hot Patch	0.25	\$37,369
	Woodcrest Dr	2	Digout and Hot Patch	0.28	\$41,822
Total for Year 2021				19.99	\$3,397,899

Year	Street	Order ID	Repair	Miles Treated	Cost
2022	Abbott St	1	Shim and Overlay	0.23	\$32,963
	Adelaide St	1	Digout and Hot Patch	0.25	\$34,395
	Adelaide St	2	Digout and Hot Patch	0.26	\$36,167
	Alvirne Dr	1	Digout and Hot Patch	0.25	\$27,858
	Alvirne Dr	2	Digout and Hot Patch	0.33	\$36,460
	Baker St	1	Shim and Overlay	0.25	\$55,070
	Baker St	2	Shim and Overlay	0.13	\$21,488
	Blackstone St	1	Digout and Hot Patch	0.26	\$29,316
	Bonnie Ln	1	Digout and Hot Patch	0.22	\$29,191
	Campbello St	1	Shim and Overlay	0.22	\$28,615
	Campbello St	2	Shim and Overlay	0.07	\$8,049
	Campbello St	3	Shim and Overlay	0.12	\$19,862
	Cardinal Dr	1	Digout and Hot Patch	0.24	\$36,800
	Common St	1	Digout and Hot Patch	0.10	\$9,127
	Cummings St	1	Shim and Overlay	0.19	\$40,490
	Derry Ln	1	Shim and Overlay	0.25	\$39,466
	Derry Ln	2	Shim and Overlay	0.25	\$39,333
	Derry Ln	3	Shim and Overlay	0.14	\$22,073
	Easy St	1	Digout and Hot Patch	0.09	\$11,579
	Falcon Dr	1	Digout and Hot Patch	0.35	\$48,536
	Forest Rd	1	Digout and Hot Patch	0.25	\$33,374
	Forest Rd	2	Digout and Hot Patch	0.20	\$26,597
	Gambia St	1	Shim and Overlay	0.11	\$14,113
	Garrison Farm Rd	1	Digout and Hot Patch	0.26	\$30,533
	George St	1	Digout and Hot Patch	0.25	\$34,932
	Gloria Ave	1	Digout and Hot Patch	0.15	\$14,493
	Greeley St	1	Shim and Overlay	0.25	\$44,136
	Greeley St	2	Shim and Overlay	0.25	\$44,107
	Greeley St	3	Shim and Overlay	0.25	\$44,206
	Greeley St	4	Shim and Overlay	0.25	\$44,103
	Greeley St	5	Shim and Overlay	0.25	\$41,032
	Greeley St	6	Shim and Overlay	0.25	\$41,060
Greeley St	7	Shim and Overlay	0.25	\$44,124	
Greeley St	8	Shim and Overlay	0.25	\$44,140	

Year	Street	Order ID	Repair	Miles Treated	Cost
2022	Greeley St	9	Shim and Overlay	0.31	\$55,117
	Haverhill St	1	Shim and Overlay	0.24	\$40,196
	Highland St	2	Shim and Overlay	0.25	\$47,486
	Highland St	3	Shim and Overlay	0.25	\$40,988
	Highland St	4	Shim and Overlay	0.25	\$40,928
	Highland St	5	Shim and Overlay	0.25	\$40,996
	Highland St	6	Shim and Overlay	0.25	\$41,071
	Highland St	7	Shim and Overlay	0.25	\$41,089
	Highland St	8	Shim and Overlay	0.13	\$20,898
	Jefferson Dr	1	Digout and Hot Patch	0.33	\$50,095
	Kenyon St	1	Shim and Overlay	0.17	\$20,167
	Lampron Rd	1	FDR	0.14	\$40,855
	Ledge Rd	1	Shim and Overlay	0.25	\$39,555
	Ledge Rd	2	Shim and Overlay	0.34	\$53,852
	Leslie St	1	Shim and Overlay	0.09	\$15,214
	Lindsay St	1	Digout and Hot Patch	0.23	\$25,262
	Madison Dr	1	Digout and Hot Patch	0.34	\$58,377
	Marsh Rd	1	Digout and Hot Patch	0.25	\$28,920
	Marsh Rd	2	Digout and Hot Patch	0.21	\$24,318
	Meadowlark Dr	1	Digout and Hot Patch	0.27	\$42,513
	Megan Dr	1	Digout and Hot Patch	0.14	\$17,899
	Merrimack St	1	Shim and Overlay	0.22	\$28,540
	Mockingbird Ln	1	Digout and Hot Patch	0.21	\$32,354
	Monroe Dr	1	Digout and Hot Patch	0.08	\$13,007
	Monroe Dr	2	Digout and Hot Patch	0.10	\$16,426
	Nottingham St	1	Digout and Hot Patch	0.15	\$16,383
	Page Rd	1	Digout and Hot Patch	0.08	\$9,809
	Raven Dr	1	Digout and Hot Patch	0.18	\$25,636
	Raymond St	1	Shim and Overlay	0.15	\$24,004
	Robin Dr	2	Digout and Hot Patch	0.25	\$35,643
	Robo Dr	1	Digout and Hot Patch	0.17	\$22,875
	Sagamore Park Rd	2	Digout and Hot Patch	0.25	\$28,953
	Sagamore Park Rd	3	Digout and Hot Patch	0.13	\$14,626
	School St	2	Digout and Hot Patch	0.21	\$35,382
	Speare Rd	1	Shim and Overlay	0.25	\$37,857
	Speare Rd	2	Shim and Overlay	0.25	\$37,815
Speare Rd	3	Shim and Overlay	0.25	\$37,823	
Speare Rd	4	Shim and Overlay	0.25	\$37,851	
Speare Rd	5	Shim and Overlay	0.28	\$42,277	
Sullivan Rd	1	Shim and Overlay	0.25	\$36,236	
Sullivan Rd	2	Shim and Overlay	0.25	\$36,359	
Sullivan Rd	3	Shim and Overlay	0.25	\$36,240	

Year	Street	Order ID	Repair	Miles Treated	Cost
2022	Sullivan Rd	4	Shim and Overlay	0.25	\$36,247
	Sullivan Rd	5	Shim and Overlay	0.25	\$36,352
	Sullivan Rd	6	Shim and Overlay	0.29	\$42,332
	Sunland Dr	1	Digout and Hot Patch	0.25	\$29,995
	Sunland Dr	2	Digout and Hot Patch	0.26	\$30,885
	Tolles St	1	Digout and Hot Patch	0.14	\$15,780
	Webster St	1	Digout and Hot Patch	0.25	\$30,012
	Webster St	2	Digout and Hot Patch	0.25	\$30,087
	Webster St	5	Digout and Hot Patch	0.19	\$23,213
Webster St	6	Digout and Hot Patch	0.04	\$3,674	
Total for Year 2022				18.70	\$2,778,253

Year	Street	Order ID	Repair	Miles Treated	Cost
2023	Belknap Rd	1	Shim and Overlay	0.25	\$42,653
	Belknap Rd	2	Shim and Overlay	0.25	\$42,603
	Belknap Rd	3	Shim and Overlay	0.25	\$49,340
	Belknap Rd	4	Shim and Overlay	0.25	\$49,237
	Belknap Rd	5	Shim and Overlay	0.21	\$42,299
	Bungalow Ave	1	Digout and Hot Patch	0.11	\$9,817
	Bush Hill Rd	1	Shim and Overlay	0.25	\$41,092
	Bush Hill Rd	2	Shim and Overlay	0.25	\$40,998
	Bush Hill Rd	3	Shim and Overlay	0.25	\$41,005
	Bush Hill Rd	4	Shim and Overlay	0.25	\$40,871
	Bush Hill Rd	5	Shim and Overlay	0.25	\$40,976
	Bush Hill Rd	6	Shim and Overlay	0.25	\$41,005
	Bush Hill Rd	7	Shim and Overlay	0.25	\$41,001
	Bush Hill Rd	8	Shim and Overlay	0.29	\$47,213
	Bush Hill Rd	9	Shim and Overlay	0.25	\$40,999
	Bush Hill Rd	10	Shim and Overlay	0.25	\$40,971
	Bush Hill Rd	11	Shim and Overlay	0.17	\$27,460
	Clark St	1	Digout and Hot Patch	0.07	\$6,815
	Commercial St	1	Shim and Overlay	0.16	\$48,171
	Constitution Dr	1	Shim and Overlay	0.25	\$60,614
	Constitution Dr	2	Shim and Overlay	0.22	\$53,375
	Cross St	1	Digout and Hot Patch	0.21	\$27,689
	Executive Dr	1	Digout and Hot Patch	0.25	\$43,753
	Executive Dr	2	Digout and Hot Patch	0.18	\$31,844
	Executive Dr	3	Digout and Hot Patch	0.25	\$47,556
	Executive Dr	4	Digout and Hot Patch	0.17	\$32,458
	Ferry St	1	Shim and Overlay	0.27	\$77,128

Year	Street	Order ID	Repair	Miles Treated	Cost
2023	Ferry St	2	Shim and Overlay	0.27	\$71,470
	Ferry St	3	Shim and Overlay	0.27	\$65,826
	Ferry St	4	Shim and Overlay	0.23	\$52,262
	Ferry St	5	Shim and Overlay	0.38	\$77,982
	Flagstone Dr	2	Digout and Hot Patch	0.28	\$47,553
	Glenview Dr	1	Digout and Hot Patch	0.32	\$38,166
	Gordon St	1	Shim and Overlay	0.13	\$23,288
	Greentrees Dr	1	Shim and Overlay	0.19	\$30,449
	Hilindale Dr	1	Shim and Overlay	0.26	\$43,918
	Joseph Ave	1	Digout and Hot Patch	0.06	\$6,178
	Jump Ln	1	Digout and Hot Patch	0.26	\$35,972
	Leonard Ave	1	Digout and Hot Patch	0.20	\$26,388
	Magnolia St	1	Digout and Hot Patch	0.06	\$5,911
	Melendy Rd	1	Shim and Overlay	0.25	\$45,966
	Melendy Rd	2	Shim and Overlay	0.25	\$45,921
	Melendy Rd	3	Shim and Overlay	0.25	\$45,867
	Melendy Rd	4	Shim and Overlay	0.35	\$57,192
	Memorial Dr	1	Shim and Overlay	0.29	\$50,090
	Merrill St	1	Shim and Overlay	0.11	\$19,946
	Musquash Rd	1	Shim and Overlay	0.25	\$36,099
	Musquash Rd	2	Shim and Overlay	0.25	\$36,085
	Musquash Rd	3	Shim and Overlay	0.25	\$39,396
	Musquash Rd	4	Shim and Overlay	0.25	\$39,325
	Musquash Rd	5	Shim and Overlay	0.25	\$39,312
	Musquash Rd	6	Shim and Overlay	0.25	\$39,371
	Musquash Rd	7	Shim and Overlay	0.25	\$39,379
	Musquash Rd	8	Shim and Overlay	0.25	\$39,363
	Musquash Rd	9	Shim and Overlay	0.27	\$41,169
	Nathaniel Dr	1	Shim and Overlay	0.25	\$52,546
	Nathaniel Dr	2	Shim and Overlay	0.20	\$42,510
	Nevens St	1	Shim and Overlay	0.20	\$39,566
	Oak Ave	1	Digout and Hot Patch	0.09	\$8,958
	Oban Dr	1	Digout and Hot Patch	0.31	\$41,290
	Pinedale Ave	1	Digout and Hot Patch	0.08	\$7,332
Porter Ave	1	Digout and Hot Patch	0.14	\$13,382	
Riverside Dr	1	Digout and Hot Patch	0.25	\$27,902	
Riverside Dr	2	Digout and Hot Patch	0.16	\$18,199	
Sand Hill Rd	1	Shim and Overlay	0.34	\$66,436	
Schaeffer Cir	1	Shim and Overlay	0.25	\$52,567	
Schaeffer Cir	2	Shim and Overlay	0.25	\$52,481	
Schaeffer Cir	3	Shim and Overlay	0.25	\$52,509	
Schaeffer Cir	4	Shim and Overlay	0.25	\$49,157	

Year	Street	Order ID	Repair	Miles Treated	Cost
2023	Schaeffer Cir	5	Shim and Overlay	0.31	\$61,243
	Sheraton Dr	1	Shim and Overlay	0.12	\$25,385
	Short St	1	Shim and Overlay	0.14	\$23,983
	Spruce St	1	Shim and Overlay	0.21	\$35,719
	Stanley Ave	1	Digout and Hot Patch	0.09	\$9,125
	Tate St	1	Shim and Overlay	0.18	\$32,406
	Thorning Rd	1	Shim and Overlay	0.15	\$27,744
	Thurstons Dr	1	Digout and Hot Patch	0.23	\$31,540
	Trigate Rd	1	Shim and Overlay	0.25	\$44,281
	Trigate Rd	2	Shim and Overlay	0.25	\$44,312
	Trigate Rd	3	Shim and Overlay	0.34	\$60,045
	Wentworth Dr	1	Digout and Hot Patch	0.25	\$47,132
	Winn Ave	1	Digout and Hot Patch	0.11	\$14,782
	Winslow Farm Rd	1	Digout and Hot Patch	0.25	\$28,952
	Winslow Farm Rd	2	Digout and Hot Patch	0.25	\$28,969
	Winslow Farm Rd	3	Digout and Hot Patch	0.17	\$19,465
Total for Year 2023				19.05	\$3,308,701

Year	Street	Order ID	Repair	Miles Treated	Cost
2024	A St	1	Digout and Hot Patch	0.35	\$41,988
	Alpha St	1	Digout and Hot Patch	0.12	\$13,933
	Alpine Ave	1	Digout and Hot Patch	0.22	\$25,346
	Ash St	1	Digout and Hot Patch	0.08	\$9,493
	Aspen St	1	Digout and Hot Patch	0.10	\$11,571
	B St	1	Digout and Hot Patch	0.25	\$28,814
	B St	2	Digout and Hot Patch	0.32	\$36,651
	Bay St	1	Shim and Overlay	0.09	\$19,412
	Belknap Ter	1	Shim and Overlay	0.16	\$31,456
	Birch St	1	Digout and Hot Patch	0.29	\$37,663
	Blueberry Ln	1	Digout and Hot Patch	0.35	\$50,119
	Brook Dr	1	Shim and Overlay	0.25	\$51,216
	Brook Dr	2	Shim and Overlay	0.18	\$37,488
	Butternut St	1	Shim and Overlay	0.22	\$36,132
	Canna Path	1	Digout and Hot Patch	0.13	\$10,612
	Charles St	1	FDR	0.09	\$29,245
	Chase St	1	Shim and Overlay	0.19	\$53,928
	Cheney Dr	1	Digout and Hot Patch	0.25	\$36,182
	Cheney Dr	2	Digout and Hot Patch	0.14	\$20,835
	Cherry St	1	Digout and Hot Patch	0.13	\$8,204
	Copeland Dr	1	Digout and Hot Patch	0.25	\$37,319
	Copeland Dr	2	Digout and Hot Patch	0.35	\$52,104
	Cottonwood Dr	1	Shim and Overlay	0.25	\$47,684
	Cottonwood Dr	2	Shim and Overlay	0.31	\$54,689
	Derry Rd	1	Shim and Overlay	0.23	\$83,446
	Derry Rd	2	Shim and Overlay	0.23	\$102,650
	Derry Rd	3	Shim and Overlay	0.23	\$83,213
	Derry Rd	4	Shim and Overlay	0.34	\$131,500
	E St	1	Digout and Hot Patch	0.09	\$10,121
	Eayers Pond Rd	1	Shim and Overlay	0.25	\$35,881
	Eayers Pond Rd	2	Shim and Overlay	0.28	\$43,183
	Elder St	1	Digout and Hot Patch	0.10	\$6,003
	Elm Ave	1	Shim and Overlay	0.28	\$61,276
	F St	1	Digout and Hot Patch	0.12	\$13,335
	Fir Ln	1	Digout and Hot Patch	0.09	\$10,307
	First St	1	Shim and Overlay	0.14	\$30,790
	Friars Dr	1	Shim and Overlay	0.31	\$69,887
	Gibson Rd	1	Shim and Overlay	0.25	\$37,493
	Gibson Rd	2	Shim and Overlay	0.31	\$47,103
	Hartson Cir	1	Digout and Hot Patch	0.27	\$39,410
Hedgerow Dr	1	Digout and Hot Patch	0.23	\$34,677	
Hemlock St	1	Shim and Overlay	0.21	\$38,723	

Year	Street	Order ID	Repair	Miles Treated	Cost
	Hickory St	1	Shim and Overlay	0.31	\$50,730
	Highland Ave	1	Shim and Overlay	0.25	\$51,376
	Ireland St	1	Digout and Hot Patch	0.11	\$13,172
	Iris Path	1	Digout and Hot Patch	0.09	\$7,785
	Juniper St	1	Shim and Overlay	0.10	\$17,896
	Kestral Ln	1	Digout and Hot Patch	0.21	\$31,153
	Library St	1	Shim and Overlay	0.25	\$50,940
	Library St	2	Shim and Overlay	0.14	\$28,851
	Lilac St	1	Digout and Hot Patch	0.09	\$9,019
	Linden St	1	Digout and Hot Patch	0.22	\$27,239
	Locust St	1	Shim and Overlay	0.09	\$14,986
	Lund Dr	1	Digout and Hot Patch	0.25	\$36,138
	Lund Dr	2	Digout and Hot Patch	0.25	\$36,176
	Lund Dr	3	Digout and Hot Patch	0.30	\$43,199
	Marshmallow Path	1	Digout and Hot Patch	0.09	\$8,452
	Oakwood St	1	Shim and Overlay	0.20	\$38,669
	Philbrick St	1	Shim and Overlay	0.31	\$47,076
	Radcliffe Dr	1	FDR	0.26	\$80,838
	Ridge Ave	1	Shim and Overlay	0.12	\$19,948
	Roosevelt Ave	1	Shim and Overlay	0.33	\$70,414
	School St	1	Shim and Overlay	0.25	\$64,820
	Second St	1	Shim and Overlay	0.22	\$48,781
	Sir Isaac Way	1	Digout and Hot Patch	0.13	\$16,322
	Sunflower Path	1	Digout and Hot Patch	0.03	\$3,256
	Sycamore St	1	Shim and Overlay	0.28	\$50,777
	Tamarack St	1	FDR	0.27	\$89,926
	Third St	1	Shim and Overlay	0.15	\$25,987
	Tracy Ln	1	FDR	0.29	\$94,027
	Vinton St	1	Digout and Hot Patch	0.12	\$16,609
	Walnut St	1	Digout and Hot Patch	0.20	\$19,352
	Water St	1	Digout and Hot Patch	0.12	\$13,988
	Waterlilly Path	1	Digout and Hot Patch	0.08	\$5,511
	West Rd	1	Shim and Overlay	0.25	\$44,290
	West Rd	2	Shim and Overlay	0.13	\$23,341
	Willow St	1	Shim and Overlay	0.12	\$18,068
	Winnhaven Dr	1	Digout and Hot Patch	0.25	\$31,271
Total for Year 2024				15.88	\$2,911,463

Year	Street	Order ID	Repair	Miles Treated	Cost
2025	Able St	1	FDR	0.09	\$22,679
	Atwood Ave	1	FDR	0.24	\$61,115
	Barretts Hill Rd	3	Shim and Overlay	0.25	\$40,826
	Barretts Hill Rd	4	Shim and Overlay	0.25	\$40,860
	Barretts Hill Rd	7	Shim and Overlay	0.25	\$46,092
	Barretts Hill Rd	8	Shim and Overlay	0.25	\$46,093
	Barretts Hill Rd	9	Shim and Overlay	0.25	\$46,094
	Barretts Hill Rd	10	Shim and Overlay	0.32	\$59,118
	Beechwood Rd	1	Digout and Hot Patch	0.25	\$38,792
	Beechwood Rd	2	Digout and Hot Patch	0.25	\$38,840
	Beechwood Rd	3	Digout and Hot Patch	0.27	\$41,166
	Bockes Rd	1	Digout and Hot Patch	0.25	\$28,763
	Bockes Rd	2	Digout and Hot Patch	0.25	\$28,757
	Bockes Rd	3	Digout and Hot Patch	0.20	\$22,911
	Burns Hill Rd	1	Shim and Overlay	0.25	\$42,632
	Burns Hill Rd	2	Shim and Overlay	0.25	\$42,587
	Burns Hill Rd	3	Shim and Overlay	0.25	\$42,602
	Burns Hill Rd	4	Shim and Overlay	0.25	\$42,684
	Burns Hill Rd	5	Shim and Overlay	0.25	\$42,789
	Burns Hill Rd	6	Shim and Overlay	0.24	\$40,419
	Campbell Ave	1	Shim and Overlay	0.06	\$13,706
	Chagnon Ln	1	Digout and Hot Patch	0.25	\$38,878
	Chagnon Ln	2	Digout and Hot Patch	0.29	\$45,162
	Glen Dr	1	Digout and Hot Patch	0.25	\$36,353
	Griffin Rd	1	Shim and Overlay	0.25	\$39,063
	Griffin Rd	2	Shim and Overlay	0.25	\$39,055
	Griffin Rd	3	Shim and Overlay	0.25	\$39,033
	Griffin Rd	4	Shim and Overlay	0.22	\$34,174
	Hamblett Ave	1	Shim and Overlay	0.09	\$11,120
	Henry Dr	1	Digout and Hot Patch	0.25	\$36,354
	Henry Dr	2	Digout and Hot Patch	0.16	\$23,015
	Heritage Cir	1	Digout and Hot Patch	0.25	\$38,858
	Heritage Cir	2	Digout and Hot Patch	0.25	\$38,851
	Heritage Cir	3	Digout and Hot Patch	0.25	\$37,608
	Heritage Cir	4	Digout and Hot Patch	0.16	\$23,469
	Kienia Rd	2	Shim and Overlay	0.25	\$44,427
	Kienia Rd	3	Shim and Overlay	0.25	\$44,312
	Kienia Rd	4	Shim and Overlay	0.25	\$44,430
	Kienia Rd	5	Shim and Overlay	0.19	\$35,865
	Lawrence Rd	1	Shim and Overlay	0.25	\$42,660
Lawrence Rd	2	Shim and Overlay	0.25	\$42,556	
Lawrence Rd	3	Shim and Overlay	0.25	\$42,583	

Year	Street	Order ID	Repair	Miles Treated	Cost
2025	Lawrence Rd	4	Shim and Overlay	0.21	\$35,536
	Mark St	1	Digout and Hot Patch	0.28	\$41,739
	NH 111 EB On ramp (Ferry St)	1	Shim and Overlay	0.05	\$5,532
	Nobby Ln	1	FDR	0.07	\$23,928
	Prince Dr	1	Digout and Hot Patch	0.12	\$16,781
	Rangers Dr	1	Digout and Hot Patch	0.25	\$32,601
	Rangers Dr	2	Digout and Hot Patch	0.25	\$32,596
	Rangers Dr	3	Shim and Overlay	0.25	\$46,151
	Rangers Dr	4	Shim and Overlay	0.17	\$31,950
	Robinson Rd	1	Shim and Overlay	0.25	\$42,602
	Robinson Rd	2	Shim and Overlay	0.25	\$43,164
	Robinson Rd	3	Shim and Overlay	0.26	\$46,966
	Robinson Rd	4	Shim and Overlay	0.26	\$46,356
	Robinson Rd	5	Shim and Overlay	0.28	\$49,433
	Robinson Rd	6	Shim and Overlay	0.25	\$44,554
	Robinson Rd	7	Shim and Overlay	0.27	\$47,636
	Robinson Rd	8	Shim and Overlay	0.24	\$43,313
	Robinson Rd	9	Shim and Overlay	0.27	\$48,315
	Robinson Rd	10	Shim and Overlay	0.27	\$47,094
	Robinson Rd	11	Shim and Overlay	0.28	\$50,440
	Robinson Rd	12	Shim and Overlay	0.24	\$59,514
	Robinson Rd	13	Shim and Overlay	0.23	\$57,801
	Saint Anthony Dr	1	FDR	0.25	\$105,324
	Saint Anthony Dr	2	Digout and Hot Patch	0.17	\$26,911
	Saint Francis Pl	1	Digout and Hot Patch	0.35	\$55,856
	Saint Mary Dr	1	Digout and Hot Patch	0.23	\$36,121
	Sandalwood Rd	1	Digout and Hot Patch	0.25	\$30,069
	Sandalwood Rd	2	Digout and Hot Patch	0.17	\$19,965
	Shelley Dr	1	FDR	0.27	\$113,152
	Stonewood Ln	1	Digout and Hot Patch	0.25	\$30,078
	Stonewood Ln	2	Digout and Hot Patch	0.24	\$28,941
	Stoney Ln	1	Digout and Hot Patch	0.25	\$41,296
Stoney Ln	2	Digout and Hot Patch	0.26	\$43,290	
Virginia Dr	1	Shim and Overlay	0.15	\$33,021	
Wildwood Ter	1	Digout and Hot Patch	0.28	\$40,894	
Woodridge Dr	1	Digout and Hot Patch	0.29	\$37,134	
Total for Year 2025				18.19	\$3,143,401

Year	Street	Order ID	Repair	Miles Treated	Cost
2026	Bear Path Ln	1	Digout and Hot Patch	0.25	\$39,052
	Bear Path Ln	2	Digout and Hot Patch	0.25	\$39,057
	Bear Path Ln	3	Digout and Hot Patch	0.24	\$37,030
	Berkeley Dr	1	Digout and Hot Patch	0.15	\$17,709
	Boyd Rd	1	Shim and Overlay	0.25	\$42,484
	Boyd Rd	2	Shim and Overlay	0.25	\$42,418
	Boyd Rd	3	Shim and Overlay	0.25	\$42,416
	Boyd Rd	4	Shim and Overlay	0.28	\$47,258
	Bradford Cir	1	Shim and Overlay	0.32	\$67,982
	Breakneck Rd	1	Shim and Overlay	0.25	\$50,076
	Breakneck Rd	2	Shim and Overlay	0.23	\$46,080
	Brightside Dr	1	Shim and Overlay	0.29	\$66,455
	Campbello St	2	Digout and Hot Patch	0.07	\$6,649
	Circle Dr	1	FDR	0.31	\$132,565
	Circle Dr	1	Digout and Hot Patch	0.06	\$10,332
	Clement Rd	1	Shim and Overlay	0.25	\$46,083
	Clement Rd	2	Shim and Overlay	0.25	\$46,164
	Clement Rd	3	Shim and Overlay	0.25	\$44,317
	Clement Rd	4	Shim and Overlay	0.25	\$38,736
	Clement Rd	5	Shim and Overlay	0.19	\$29,284
	Cutler Rd	1	Shim and Overlay	0.22	\$32,289
	Deblo Dr	1	FDR	0.19	\$84,268
	Flying Rock Rd	1	Digout and Hot Patch	0.25	\$39,063
	Flying Rock Rd	2	Digout and Hot Patch	0.25	\$39,144
	Flying Rock Rd	3	Digout and Hot Patch	0.32	\$49,553
	Forest Cir	1	FDR	0.08	\$32,054
	Fuller Dr	1	Digout and Hot Patch	0.20	\$26,109
	Hayley Ct	1	Digout and Hot Patch	0.09	\$13,740
	Hayward Pl	1	FDR	0.06	\$16,044
	Hillside Dr	1	Digout and Hot Patch	0.07	\$11,316
	Jessica Ln	1	Digout and Hot Patch	0.19	\$28,027
	Kay Ct	1	Digout and Hot Patch	0.12	\$17,988
	Kris Ct	1	Digout and Hot Patch	0.08	\$11,619
	Leaor Cir	1	Digout and Hot Patch	0.14	\$21,771
	Manny Ct	1	Digout and Hot Patch	0.08	\$12,171
	Meadow Dr	1	Shim and Overlay	0.28	\$60,994
	Old Derry Rd	1	Shim and Overlay	0.25	\$47,998
	Old Derry Rd	1	Shim and Overlay	0.25	\$46,140
	Old Derry Rd	2	Shim and Overlay	0.37	\$65,588
	Old Derry Rd	2	Shim and Overlay	0.25	\$47,994
Old Derry Rd	3	Shim and Overlay	0.25	\$47,997	
Old Derry Rd	4	Shim and Overlay	0.25	\$47,989	

Year	Street	Order ID	Repair	Miles Treated	Cost
2026	Old Derry Rd	5	Shim and Overlay	0.25	\$47,954
	Old Derry Rd	6	Shim and Overlay	0.25	\$42,382
	Old Derry Rd	7	Shim and Overlay	0.25	\$42,432
	Old Derry Rd	8	Shim and Overlay	0.21	\$36,363
	Parker Dr	1	Digout and Hot Patch	0.34	\$53,218
	Plaza Ave	1	FDR	0.33	\$136,140
	Putnam Rd	1	Shim and Overlay	0.25	\$42,476
	Putnam Rd	2	Shim and Overlay	0.17	\$28,667
	Rosemary Ct	1	Digout and Hot Patch	0.11	\$17,190
	Saint Laurent Dr	1	FDR	0.25	\$102,915
	Saint Laurent Dr	2	FDR	0.35	\$141,999
	Senter Farm Rd	1	Digout and Hot Patch	0.27	\$35,468
	Senter Farm Rd	2	Digout and Hot Patch	0.31	\$40,721
	Sheffield St	1	Shim and Overlay	0.25	\$51,626
	Sheffield St	2	Shim and Overlay	0.22	\$45,013
	Sousa Blvd	1	Shim and Overlay	0.25	\$53,467
	Sousa Blvd	2	Shim and Overlay	0.25	\$53,606
	Sousa Blvd	3	Shim and Overlay	0.25	\$53,638
	Sousa Blvd	4	Shim and Overlay	0.13	\$28,568
	Stonemill Dr	1	FDR	0.07	\$17,646
	Sutherland Dr	1	Digout and Hot Patch	0.25	\$37,804
	Sutherland Dr	2	Digout and Hot Patch	0.19	\$28,846
	Tear Drop Cir	1	FDR	0.09	\$31,325
	Westchester Ct	1	Digout and Hot Patch	0.24	\$27,744
Williams Dr	1	Digout and Hot Patch	0.25	\$37,737	
Williams Dr	2	Digout and Hot Patch	0.15	\$22,187	
Wissahickon Dr	1	Shim and Overlay	0.18	\$42,391	
Total for Year 2026				15.01	\$2,991,520

Year	Street	Order ID	Repair	Miles Treated	Cost
2027	Bond St	1	Digout and Hot Patch	0.15	\$22,350
	Central St	1	Shim and Overlay	0.25	\$77,975
	Central St	2	Shim and Overlay	0.22	\$72,364
	Central St	3	Shim and Overlay	0.29	\$101,598
	Central St	4	Shim and Overlay	0.26	\$75,253
	Central St	5	Shim and Overlay	0.25	\$76,829
	Central St	6	Shim and Overlay	0.28	\$108,693
	Central St	7	Shim and Overlay	0.23	\$71,290
	Cin Fre Dr	1	Digout and Hot Patch	0.17	\$23,256
	Clifton St	1	Digout and Hot Patch	0.05	\$6,121
	Colson Rd	1	Digout and Hot Patch	0.11	\$13,692
	Copper Hill Rd	1	Digout and Hot Patch	0.22	\$34,900
	Empire Cir	1	Digout and Hot Patch	0.22	\$35,947
	Evergreen Dr	1	Digout and Hot Patch	0.27	\$47,218
	Granite Hill Rd	1	Digout and Hot Patch	0.12	\$15,346
	Harwood Rd	1	Digout and Hot Patch	0.11	\$14,507
	Hummingbird Ln	1	Digout and Hot Patch	0.20	\$31,471
	Hunter Ln	1	Digout and Hot Patch	0.19	\$26,821
	Hurley St	1	Shim and Overlay	0.25	\$52,814
	Lions Ave	1	Digout and Hot Patch	0.20	\$32,265
	Marie Ln	1	FDR	0.16	\$68,676
	Mountain View Dr	1	FDR	0.35	\$158,538
	Noel St	1	Digout and Hot Patch	0.06	\$12,172
	North Ridge Rd	1	Digout and Hot Patch	0.22	\$33,997
	Pasture Dr	1	FDR	0.25	\$114,140
	Pasture Dr	2	FDR	0.19	\$88,635
	Pelham Rd	1	Shim and Overlay	0.25	\$53,786
	Pelham Rd	2	Shim and Overlay	0.25	\$51,734
	Pelham Rd	3	Shim and Overlay	0.25	\$49,877
	Pelham Rd	4	Shim and Overlay	0.25	\$49,886
	Pelham Rd	5	Shim and Overlay	0.25	\$49,875
	Pelham Rd	6	Shim and Overlay	0.23	\$46,487
	Phillips Dr	1	FDR	0.18	\$66,307
	Pine Rd	1	Digout and Hot Patch	0.25	\$31,156
	Pine Rd	2	Digout and Hot Patch	0.25	\$31,154
	Pine Rd	3	Digout and Hot Patch	0.25	\$32,511
	Pine Rd	4	Digout and Hot Patch	0.25	\$32,516
	Pine Rd	5	Digout and Hot Patch	0.16	\$20,513
	Rayes Dr	1	FDR	0.12	\$46,448
	Rega Ave	1	Shim and Overlay	0.27	\$55,034
Rena Ave	1	Shim and Overlay	0.25	\$48,103	
Rena Ave	2	Shim and Overlay	0.26	\$50,467	

Year	Street	Order ID	Repair	Miles Treated	Cost
2027	Ridgecrest Dr	1	Shim and Overlay	0.33	\$72,429
	Rita Ave	1	Shim and Overlay	0.29	\$58,295
	Robin Dr	1	Shim and Overlay	0.25	\$61,368
	Robin Dr	3	Shim and Overlay	0.16	\$39,693
	Rose Dr	1	Shim and Overlay	0.16	\$30,627
	Savin St	1	Digout and Hot Patch	0.04	\$3,975
	Scenic Ln	1	Shim and Overlay	0.18	\$39,179
	Shoreline Dr	1	Shim and Overlay	0.36	\$80,308
	Steele Rd	1	Digout and Hot Patch	0.25	\$32,439
	Steele Rd	2	Shim and Overlay	0.13	\$22,156
	Travers St	1	Digout and Hot Patch	0.13	\$17,237
	Wade Rd	1	Shim and Overlay	0.23	\$53,722
	Wagner Way	1	Shim and Overlay	0.30	\$68,514
	Wason Rd	1	Shim and Overlay	0.25	\$47,997
	Wason Rd	2	Shim and Overlay	0.25	\$49,841
	Wason Rd	3	Shim and Overlay	0.25	\$49,850
	Wason Rd	4	Shim and Overlay	0.25	\$47,978
	Wason Rd	5	Shim and Overlay	0.25	\$47,927
	Wason Rd	6	Shim and Overlay	0.25	\$49,814
	Wason Rd	7	Shim and Overlay	0.25	\$49,873
	Wason Rd	8	Shim and Overlay	0.25	\$49,865
	Wason Rd	9	Shim and Overlay	0.25	\$49,864
	Wason Rd	10	Shim and Overlay	0.25	\$49,835
	Wason Rd	11	Shim and Overlay	0.15	\$29,506
	Webster St	1	Shim and Overlay	0.25	\$51,714
	Webster St	2	Shim and Overlay	0.25	\$51,845
	Webster St	3	Shim and Overlay	0.25	\$51,907
	Webster St	4	Shim and Overlay	0.25	\$51,861
	Webster St	5	Shim and Overlay	0.19	\$39,999
	Webster St	6	Shim and Overlay	0.04	\$6,331
Wende Dr	1	Shim and Overlay	0.25	\$57,468	
Wende Dr	2	Shim and Overlay	0.13	\$30,323	
Total for Year 2027				16.06	\$3,576,460

Year	Street	Order ID	Repair	Miles Treated	Cost
2028	Beaver Path	1	Shim and Overlay	0.31	\$65,000
	Bridle Bridge Rd	1	Shim and Overlay	0.17	\$38,406
	Bruce St	1	FDR	0.13	\$51,488
	Catalpa Dr	1	Digout and Hot Patch	0.13	\$21,069
	Christine Dr	1	FDR	0.16	\$70,794
	Crestwood Dr	1	Digout and Hot Patch	0.25	\$40,811
	Crestwood Dr	2	Digout and Hot Patch	0.18	\$29,112
	D St	1	Digout and Hot Patch	0.10	\$13,465
	David Dr	1	Shim and Overlay	0.25	\$57,886
	David Dr	2	Shim and Overlay	0.37	\$85,674
	Daw St	1	Shim and Overlay	0.09	\$21,500
	Deer Run	1	Digout and Hot Patch	0.21	\$31,543
	Deerfield Ave	1	Shim and Overlay	0.21	\$48,739
	East Hill Dr	1	Shim and Overlay	0.34	\$76,029
	Edgewood Dr	1	Shim and Overlay	0.26	\$62,923
	Elaine St	1	Shim and Overlay	0.26	\$51,373
	Flagstone Dr	1	Shim and Overlay	0.25	\$73,734
	Gates Ln	1	Digout and Hot Patch	0.12	\$20,015
	Greenfield Dr	1	Digout and Hot Patch	0.23	\$37,755
	Groves Farm Rd	1	Shim and Overlay	0.26	\$46,211
	Hampshire Dr	1	Shim and Overlay	0.25	\$71,932
	Hampshire Dr	2	Shim and Overlay	0.20	\$56,097
	Hawkview Rd	1	Digout and Hot Patch	0.25	\$40,909
	Hawkview Rd	2	Digout and Hot Patch	0.13	\$21,076
	Hazelwood Rd	1	Digout and Hot Patch	0.25	\$33,793
	Holly Ln	1	Shim and Overlay	0.23	\$56,282
	Industrial Dr	1	Shim and Overlay	0.37	\$119,004
	Jeanne St	1	FDR	0.16	\$69,632
	Jeremy Ln	1	FDR	0.11	\$47,250
	Julie Ln	1	FDR	0.17	\$84,792
	Karas Crossing Dr	1	Digout and Hot Patch	0.23	\$37,352
	Kienia Rd	1	Shim and Overlay	0.25	\$49,818
	Lenny Ln	1	FDR	0.25	\$107,609
	Lenny Ln	2	FDR	0.13	\$54,246
Linda St	1	FDR	0.23	\$93,988	
Lowell Rd	1	Shim and Overlay	0.29	\$151,909	
Lowell Rd	2	Shim and Overlay	0.35	\$183,803	
Lowell Rd	3	Shim and Overlay	0.33	\$159,320	
Lowell Rd	4	Shim and Overlay	0.28	\$115,596	
Lowell Rd	5	Shim and Overlay	0.22	\$89,693	
Lowell Rd	6	Shim and Overlay	0.26	\$80,506	
Lowell Rd	7	Shim and Overlay	0.23	\$73,556	

Lowell Rd	8	Shim and Overlay	0.25	\$103,884
Old Coach Rd	1	Shim and Overlay	0.25	\$61,860
Old Coach Rd	2	Shim and Overlay	0.28	\$70,137
Paradise Ln	1	Shim and Overlay	0.22	\$51,751
Park Ave	1	Shim and Overlay	0.35	\$112,957
Ponderosa Dr	1	Shim and Overlay	0.32	\$74,981
Rebecca Cir	1	Digout and Hot Patch	0.21	\$68,444
Redwood Rd	1	Digout and Hot Patch	0.17	\$24,375
Sanders Rd	1	Shim and Overlay	0.32	\$66,756
Serenity Cir	1	Digout and Hot Patch	0.15	\$24,212
Sherburne Rd	1	Shim and Overlay	0.16	\$43,605
Stevens Dr	1	Shim and Overlay	0.19	\$46,481
Stuart St	1	FDR	0.12	\$45,837
Sunrise Dr	1	Shim and Overlay	0.29	\$57,884
Timber Ln	1	FDR	0.05	\$20,192
Whip Poor Will Dr	1	Digout and Hot Patch	0.07	\$12,566
Windham Rd	1	Shim and Overlay	0.25	\$49,835
Windham Rd	2	Shim and Overlay	0.25	\$49,883
Windham Rd	3	Shim and Overlay	0.25	\$51,902
Windham Rd	4	Shim and Overlay	0.25	\$51,896
Windham Rd	5	Shim and Overlay	0.19	\$39,070
Winding Hollow Rd	1	Digout and Hot Patch	0.35	\$58,651
Youngs Dr	1	Digout and Hot Patch	0.06	\$7,319
Total for Year 2028			14.66	\$3,936,167

Year	Street	Order ID	Repair	Miles Treated	Cost
2029	Barretts Hill Rd	1	Shim and Overlay	0.25	\$53,981
	Barretts Hill Rd	2	Shim and Overlay	0.25	\$53,943
	Barretts Hill Rd	5	Shim and Overlay	0.25	\$47,818
	Barretts Hill Rd	6	Shim and Overlay	0.25	\$47,674
	Bush Hill Rd	1	Shim and Overlay	0.25	\$51,995
	Bush Hill Rd	2	Shim and Overlay	0.25	\$51,875
	Bush Hill Rd	3	Shim and Overlay	0.25	\$51,884
	Bush Hill Rd	4	Shim and Overlay	0.25	\$51,715
	Bush Hill Rd	5	Shim and Overlay	0.25	\$51,847
	Bush Hill Rd	6	Shim and Overlay	0.25	\$51,884
	Bush Hill Rd	7	Shim and Overlay	0.25	\$51,879
	Bush Hill Rd	8	Shim and Overlay	0.29	\$59,740
	Bush Hill Rd	9	Shim and Overlay	0.25	\$51,877
	Bush Hill Rd	10	Shim and Overlay	0.25	\$51,841
	Bush Hill Rd	11	Shim and Overlay	0.17	\$34,746
	Cathedral Ln	1	FDR	0.24	\$94,686
	Cedar St	1	Digout and Hot Patch	0.25	\$41,129
	Cedar St	2	Digout and Hot Patch	0.14	\$23,357
	Constitution Dr	1	Shim and Overlay	0.25	\$76,696
	Constitution Dr	2	Shim and Overlay	0.22	\$67,536
	Driveway A051	1	Digout and Hot Patch	0.17	\$28,096
	Gabrielle Dr	1	Digout and Hot Patch	0.25	\$41,027
	Gabrielle Dr	2	Digout and Hot Patch	0.17	\$27,201
	Gowing Rd	1	Shim and Overlay	0.25	\$54,097
	Gowing Rd	2	Shim and Overlay	0.25	\$53,941
	Gowing Rd	3	Shim and Overlay	0.25	\$53,931
	Gowing Rd	4	Shim and Overlay	0.25	\$53,942
	Gowing Rd	5	Shim and Overlay	0.25	\$54,033
	Gowing Rd	6	Shim and Overlay	0.29	\$63,530
	Grace Dr	1	FDR	0.09	\$36,476
	Greeley St	1	Shim and Overlay	0.25	\$58,079
	Greeley St	2	Shim and Overlay	0.25	\$58,042
	Greeley St	3	Shim and Overlay	0.25	\$58,172
	Greeley St	4	Shim and Overlay	0.25	\$58,037
	Greeley St	5	Shim and Overlay	0.25	\$53,996
	Greeley St	6	Shim and Overlay	0.25	\$54,032
	Greeley St	7	Shim and Overlay	0.25	\$58,064
	Greeley St	8	Shim and Overlay	0.25	\$58,085
	Greeley St	9	Shim and Overlay	0.31	\$72,531
	Hazelwood Rd	2	Digout and Hot Patch	0.25	\$35,119
	Hazelwood Rd	3	Digout and Hot Patch	0.25	\$32,203
Hazelwood Rd	4	Digout and Hot Patch	0.23	\$30,048	

Year	Street	Order ID	Repair	Miles Treated	Cost
2029	Jacqueline St	1	FDR	0.20	\$92,009
	James Way	1	Shim and Overlay	0.25	\$60,192
	James Way	2	Shim and Overlay	0.25	\$58,126
	James Way	3	Shim and Overlay	0.33	\$76,025
	Ledge Rd	1	Shim and Overlay	0.25	\$52,052
	Ledge Rd	2	Shim and Overlay	0.34	\$70,865
	Melba Dr	1	FDR	0.25	\$115,590
	Melba Dr	2	FDR	0.23	\$104,960
	Musquash Rd	1	Shim and Overlay	0.25	\$45,677
	Musquash Rd	2	Shim and Overlay	0.25	\$45,659
	Musquash Rd	3	Shim and Overlay	0.25	\$49,848
	Musquash Rd	4	Shim and Overlay	0.25	\$49,758
	Musquash Rd	5	Shim and Overlay	0.25	\$49,742
	Musquash Rd	6	Shim and Overlay	0.25	\$49,817
	Musquash Rd	7	Shim and Overlay	0.25	\$49,827
	Musquash Rd	8	Shim and Overlay	0.25	\$49,807
	Musquash Rd	9	Shim and Overlay	0.27	\$52,092
	Old Robinson Rd	1	Digout and Hot Patch	0.23	\$30,747
	Pulpit Cir	1	FDR	0.17	\$80,026
	Riverview St	1	Digout and Hot Patch	0.14	\$22,885
	Roy Dr	1	Digout and Hot Patch	0.35	\$50,844
	School St	2	Digout and Hot Patch	0.21	\$46,561
	Security Dr	1	FDR	0.21	\$102,449
	Somerset Dr	1	Digout and Hot Patch	0.26	\$39,768
	Speare Rd	1	Shim and Overlay	0.25	\$49,817
	Speare Rd	2	Shim and Overlay	0.25	\$49,762
	Speare Rd	3	Shim and Overlay	0.25	\$49,773
	Speare Rd	4	Shim and Overlay	0.25	\$49,809
	Speare Rd	5	Shim and Overlay	0.28	\$55,634
	Sullivan Rd	1	Shim and Overlay	0.25	\$47,684
	Sullivan Rd	2	Shim and Overlay	0.25	\$47,846
	Sullivan Rd	3	Shim and Overlay	0.25	\$47,689
Sullivan Rd	4	Shim and Overlay	0.25	\$47,699	
Sullivan Rd	5	Shim and Overlay	0.25	\$47,836	
Sullivan Rd	6	Shim and Overlay	0.29	\$55,706	
Teloian Dr	1	Shim and Overlay	0.20	\$53,237	
Teloian Dr	2	Shim and Overlay	0.22	\$57,852	
Twin Meadow Dr	1	FDR	0.32	\$124,900	
Watersedge Dr	1	Digout and Hot Patch	0.18	\$28,277	
Total for Year 2029				19.74	\$4,419,628