

NAD83 (2011)

NOTES

1. THE SITE SPECIFIC SOIL MAP WAS PREPARED ON SEPTEMBER 2, 2022 BY THOMAS E. SOKOLOSKI, CERTIFIED SOIL SCIENTIST #063 OF TES ENVIRONMENTAL CONSULTANTS, LLC.

LEGEND

- PROPERTY LINE
- LIMITS OF DRAINAGE SUBCATCHMENT
- SOIL GROUP BREAKLINE
- >->- FLOW PATH (TO LINE)
- >->- REACH
- POI-1 POINT OF INTEREST
- ES-1 SUBCATCHMENT AREA
- EP-1 POND, CULVERT, OR CATCH BASIN
- ER-1 REACH

LEGEND

- HYDROLOGIC SOIL GROUP A
- HYDROLOGIC SOIL GROUP B
- HYDROLOGIC SOIL GROUP C
- HYDROLOGIC SOIL GROUP D
- IMPERVIOUS COVER
- OPEN WATER FEATURE

SOIL LEGEND (PER SITE SPECIFIC SOIL SURVEY)

SYMBOL	DESCRIPTION	HYDROLOGIC SOIL GROUP	SLOPE CLASS	DRAINAGE CLASS
26B	WINDSOR LOAMY SAND	A	0-8%	EXCESSIVELY
26C	WINDSOR LOAMY SAND	A	8-15%	EXCESSIVELY
26D	WINDSOR LOAMY SAND	A	15-25%	EXCESSIVELY
26E	WINDSOR LOAMY SAND	A	25%+	EXCESSIVELY
400B/abaaa	UDORTHENTS, SANDY	A	0-8%	EXCESSIVELY
400C/abaaa	UDORTHENTS, SANDY	A	8-15%	EXCESSIVELY
400D/abaaa	UDORTHENTS, SANDY	A	15-25%	EXCESSIVELY
400E/abaaa	UDORTHENTS, SANDY	A	25%+	EXCESSIVELY
400B/hbhaa	UDORTHENTS, SANDY	A	0-8%	UNDETERMINABLE
500B/abdad	UDORTHENTS, BEDROCK SUBSTRATUM	D	0-8%	EXCESSIVELY
550B/abeab	UDORTHENTS, BEDROCK SUBSTRATUM	B	0-8%	EXCESSIVELY

SITE DEVELOPMENT PLANS

TAX MAP 198 LOTS 11, 12, 14, 15, & 16
PRE-DEVELOPMENT HYDROLOGIC SOIL GROUP PLAN
GAS STATION/CONVENIENCE STORE
91-97 LOWELL ROAD, HUDSON, NH
 OWNED BY & PREPARED FOR
COLBEA ENTERPRISES, LLC

1"=60' (11"X17")
SCALE: 1"=30' (22"X34") **DECEMBER 13, 2023**

Seacoast Division
TFM
 Civil Engineers
 Structural Engineers
 Traffic Engineers
 Land Surveyors
 Landscape Architects
 Scientists

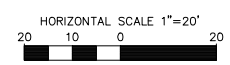
170 Commerce Way, Suite 102
 Portsmouth, NH 03801
 Phone (603) 431-2222
 Fax (603) 431-0910
 www.tfmoran.com

FILE	18149.00	DR	CHK	FB					
		CK	ERR	CADFILE	18149-00 PRE				HSG-01

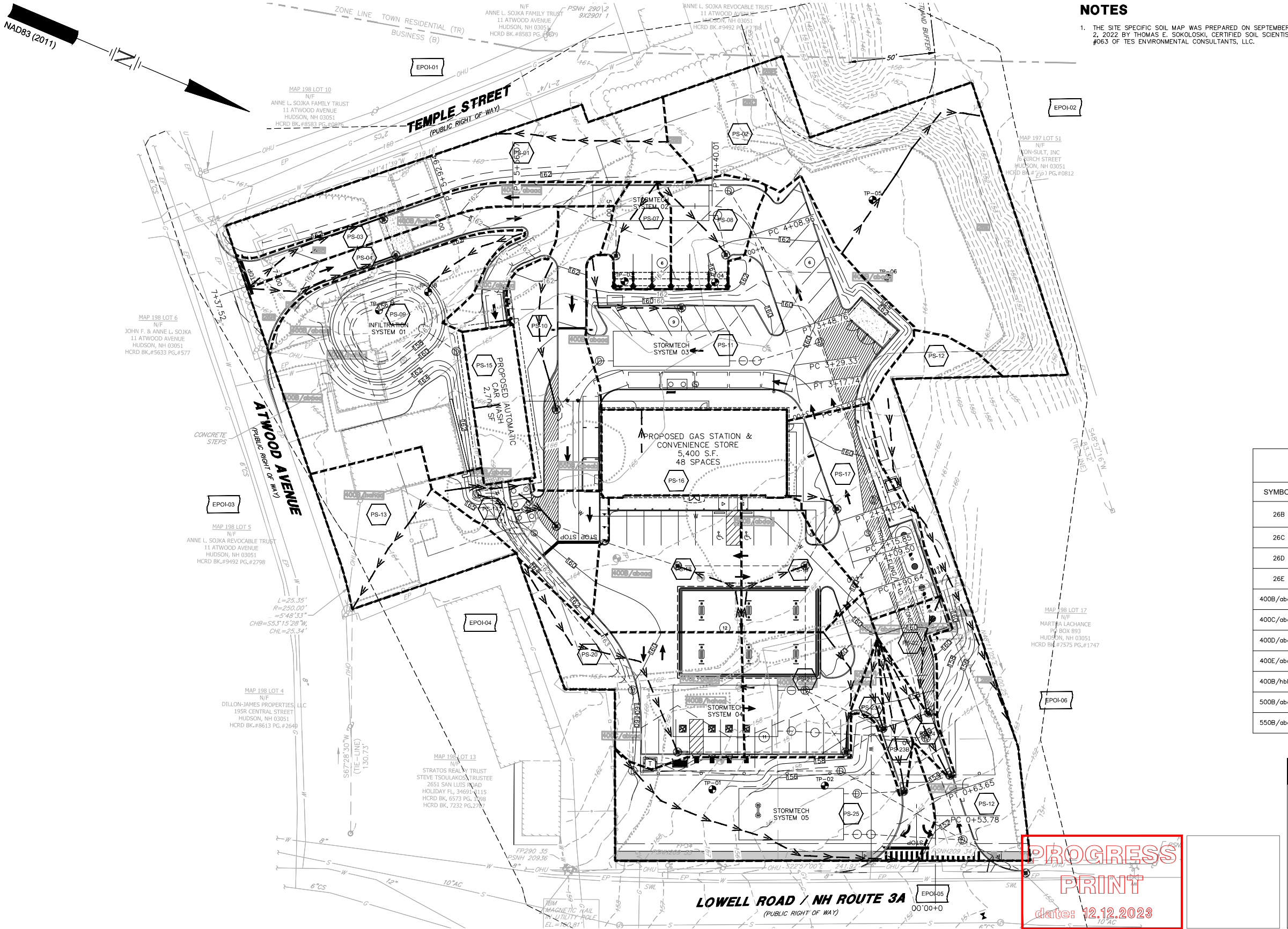
PROGRESS PRINT
 date: 12.12.2023



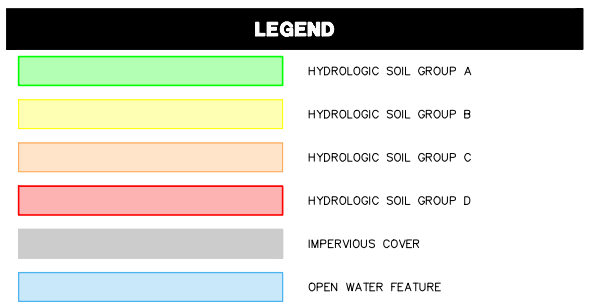
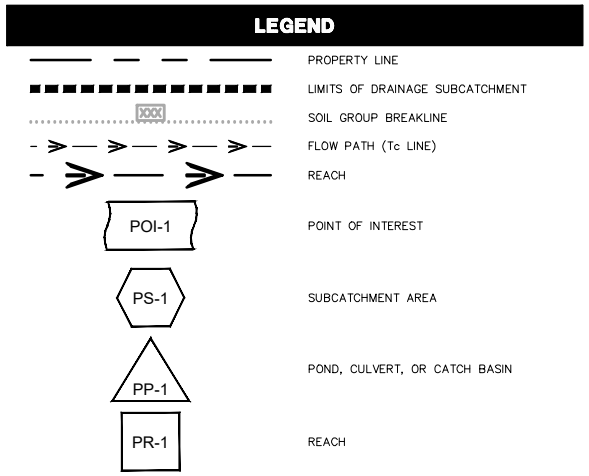
Copyright 2023 © TFMoran, Inc.
 48 Constitution Drive, Bedford, N.H. 03110
 All rights reserved. These plans and materials may not be copied, duplicated, replicated or otherwise reproduced in any form whatsoever without the prior written permission of TFMoran, Inc.
 This plan is not effective unless signed by a duly authorized officer of TFMoran, Inc.



REV	DATE	DESCRIPTION	DR	CK



NOTES
 1. THE SITE SPECIFIC SOIL MAP WAS PREPARED ON SEPTEMBER 2, 2022 BY THOMAS E. SOKOLOSKI, CERTIFIED SOIL SCIENTIST #063 OF TES ENVIRONMENTAL CONSULTANTS, LLC.



**SOIL LEGEND
(PER SITE SPECIFIC SOIL SURVEY)**

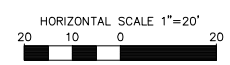
SYMBOL	DESCRIPTION	HYDROLOGIC SOIL GROUP	SLOPE CLASS	DRAINAGE CLASS
26B	WINDSOR LOAMY SAND	A	0-8%	EXCESSIVELY
26C	WINDSOR LOAMY SAND	A	8-15%	EXCESSIVELY
26D	WINDSOR LOAMY SAND	A	15-25%	EXCESSIVELY
26E	WINDSOR LOAMY SAND	A	25%+	EXCESSIVELY
400B/abaaa	UDORTHENTS, SANDY	A	0-8%	EXCESSIVELY
400C/abaaa	UDORTHENTS, SANDY	A	8-15%	EXCESSIVELY
400D/abaaa	UDORTHENTS, SANDY	A	15-25%	EXCESSIVELY
400E/abaaa	UDORTHENTS, SANDY	A	25%+	EXCESSIVELY
400B/hbhaa	UDORTHENTS, SANDY	A	0-8%	UNDETERMINABLE
500B/abdad	UDORTHENTS, BEDROCK SUBSTRATUM	D	0-8%	EXCESSIVELY
550B/abeab	UDORTHENTS, BEDROCK SUBSTRATUM	B	0-8%	EXCESSIVELY

SITE DEVELOPMENT PLANS
 TAX MAP 198 LOTS 11, 12, 14, 15, & 16
POST-DEVELOPMENT HYDROLOGIC SOIL GROUP PLAN
GAS STATION/CONVENIENCE STORE
91-97 LOWELL ROAD, HUDSON, NH
 OWNED BY & PREPARED FOR
COLBEA ENTERPRISES, LLC

1"=48' (11"X17")
SCALE: 1"=20' (22"X34") **DECEMBER 13, 2023**

**PROGRESS
PRINT**
date: 12.12.2023

Copyright 2023 © TFMoran, Inc.
 48 Constitution Drive, Bedford, N.H. 03110
 All rights reserved. These plans and materials may not be copied, duplicated, replicated or otherwise reproduced in any form whatsoever without the prior written permission of TFMoran, Inc.
 This plan is not effective unless signed by a duly authorized officer of TFMoran, Inc.



REV	DATE	DESCRIPTION	DR	CK

Seacoast Division

TFM

Civil Engineers
 Structural Engineers
 Traffic Engineers
 Land Surveyors
 Landscape Architects
 Scientists

170 Commerce Way, Suite 102
 Portsmouth, NH 03801
 Phone (603) 431-2222
 Fax (603) 431-0910
 www.tfmoran.com

18149.00 DR: MKR FB: -
 CK: BRR CADFILE: 18149-00 POST HSG-02